



Integrating Migrate7™

with

System Center Configuration Manager 2007



Microsoft®

System Center

Configuration Manager 2007

Descriptor

This guide describes the capabilities and methods of integrating Transition Migrate7™ user state migration with Microsoft System Center Configuration Manager 2007 R2.

Table of Contents

Introduction.....	3
Audience.....	3
Prior Knowledge	3
Benefits of Integration	4
Architecture Concepts	5
Getting Started	7
Prerequisites	7
Preparing the Migrate7 Environment	7
Install Migrate7.....	7
Create Data Store/s.....	9
Create User Migration Template/s.....	11
Deploying Migrate7 with SCCM	12
Prerequisites	12
Deployment Step-by-step	12
Create Migrate7 Agent Source.....	12
Create Migrate7 Agent Package	13
Create User Profile Extraction Package	15
Create User Profile Backup Package	17
Confirming Deployment/s.....	20
Deployment Tips.....	21
Migrate7 Agent Logging	21
Assessing Migrate7 with DCM.....	21
Integrating Migrate7 with SCCM OSD and MDT	22
Prerequisites	22
Adding Migrate7 client to your existing OSD task sequences	22
Auto Extract User Profiles Task Sequence – Existing Task Sequence	23
Auto Extract User Profiles Task Sequence – New Task Sequence	23
Auto Inject User Profile Task Sequence – Existing Task Sequence	24
Auto Inject User Profiles Task Sequence – New Task Sequence	25
Auto Backup User Profile Task Sequence – Existing Task Sequence	26
Auto Backup User Profiles Task Sequence – New Task Sequence.....	26
Advanced User Profile Migration	28
Additional Resources	29
Command Line Argument Quick Reference	30
COPYRIGHT AND PATENT INFORMATION.....	31

Introduction

Migrate7 is a desktop management tool designed to help IT professionals migrate and store PC user states (data, application and OS settings), for example when moving hundreds or thousands of desktops from Windows XP to Windows 7.

Migrate7 automatically extracts and preserves end-user customizations, metadata and files ("user state") from desktops and moves them to new or upgraded desktops or virtual images. Set up migrations using a graphical user interface to determine which applications and files to preserve and transfer. Easily customize to conform to company policies and customer preferences. Migrate7 can also be used as ongoing user state backup to enable ad-hoc PC replacement and data recovery.

Microsoft System Center Configuration Manager 2007 R2 is the solution for comprehensively assessing, deploying, and updating your servers, clients, and devices across physical, virtual, distributed, and mobile environments. Optimized for Windows desktop and Windows server platforms, it is the best choice for centralizing management from the data center to the desktop.

Using Configuration Manager's software distribution functionality, Migrate7 can be delivered to machines and configured to automate user profile extraction, backups, and restores. Combined these solutions provide a more robust migration and deployment solution.

Note: Throughout this document, the term "Configuration Manager" is used to refer to Microsoft System Center Configuration Manager 2007 R2, and the term "Migrate7" is used to refer to Tranxition's Migrate7 user management tool.

Audience

This document is intended for IT administrators who are interested in using Configuration Manager to deploy Migrate7 to client PCs and automating the extraction and refresh of user profiles. It provides a technical overview of the integration of Configuration Manager 2007 R2 and Migrate7, and describes how to configure and use a Configuration Manager infrastructure to deploy and manage Migrate7.

Prior Knowledge

The administrator using this guide should have previous knowledge of the following technologies:

- System Center Configuration Manager 2007
- Tranxition Migrate7

Benefits of Integration

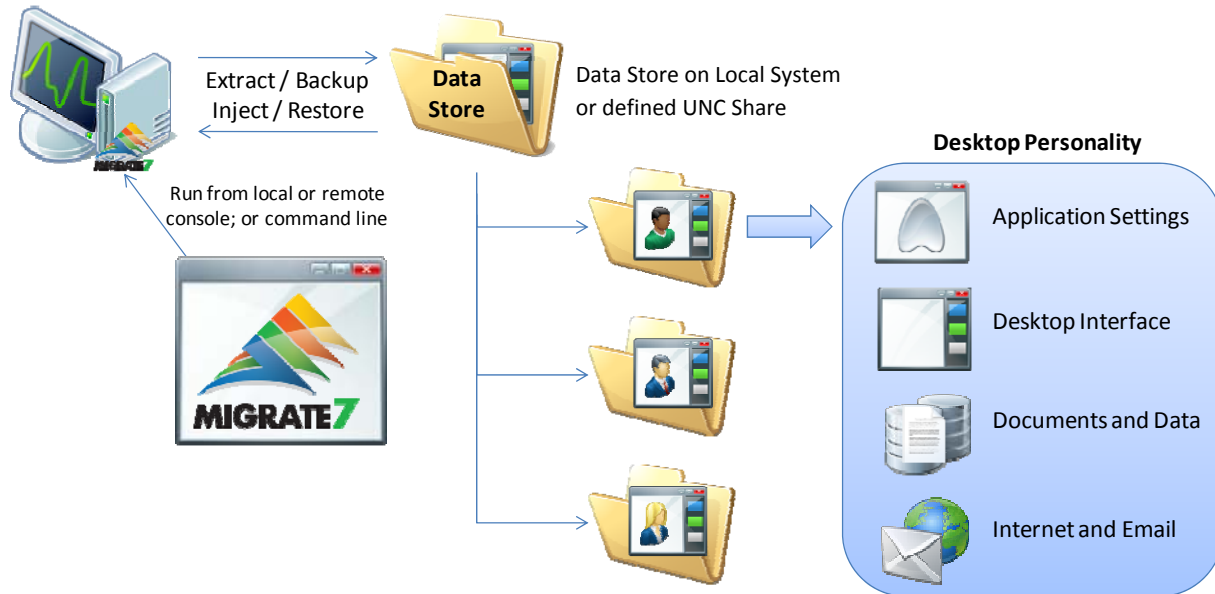
Configuration Manager R2 offers a rich set of capabilities that enterprises can leverage for managing and utilizing Migrate7. Integrating Migrate7 with Configuration Manager provides the following benefits to end users:

- **Infrastructure** –Enterprises can leverage Configuration Manager to manage all of their Migrate7 management tasks. Migrate7 integration with Configuration Manager provides enhanced capabilities including user targeting, ease of deployment, quick application installation process, and dynamic task sequencing of user state migration tasks.
- **Scalability** – Users can leverage Configuration Manager Distribution Points for hosting the Migrate7 data store, thus removing the need to deploy and maintain a separate Migrate7 data store.
- **Operating System Deployment** – By leveraging Configuration Manager’s operating system deployment feature, customers can deploy Migrate7 as part of the process of installing the OS as well as automatically migrate user data, thereby reducing the time required to get a new system up and running for an end user.
- **Automated User Backups** – With the integration with Configuration Manager, a Migrate7 client can extract users’ data store/s on a routine basis providing user state snapshots automatically through the use of Configuration Manager collections and advertisements.
- **Automated User State Migration** – Migrate7 automates the backup, restoration, and management of user state profiles offering several capabilities not available within USMT, including:
 - Graphical user interface for configuring user migration profiles, including advanced UI for managing files and registry rules
 - Ability to convert legacy application settings to current version and migrate user profiles based on roles and business groupings
 - Ability to migrate user states from, to, and between all versions of: Windows 2000, 2003, Windows XP, Vista, and Windows7

Through using this guide to integrate Migrate7 with SCCM users will be able to automatically deploy and maintain Migrate7 agents to client endpoints (note agent-less option available as of v7.5); and automatically manage user profile backup, restores, and migrations with SCCM OSD and MDT

Architecture Concepts

Migrate7 provides a centralized, graphical, wizard-driven solution to automate user state profile migrations, backups, and restores. The solution architecture consists of a central data store or stores that maintain folders for each user personality managed. Migrate7 can be configured and administered via the client console to manage user profile configurations and user state migration activities which can also be automated with command lines. The diagram below illustrates the basic architecture of the Migrate7 solution.

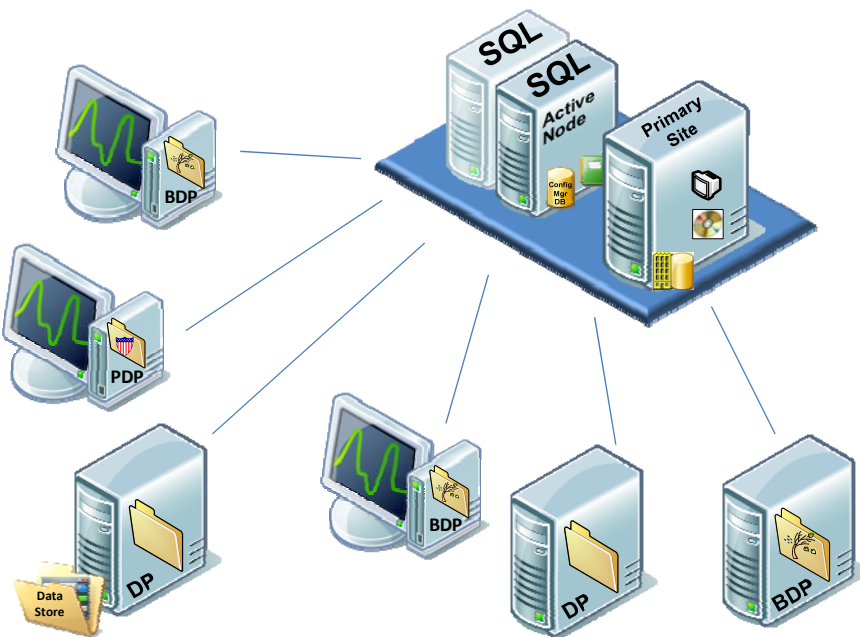


For more details on the Migrate7 architecture and automating processes with command line options please see the Migrate7 User Guide and Migrate7 Automation Guide listed in the references section at the end of this guide.

The Migrate7 solution can be fully integrated with SCCM to augment and/or replace USMT to provide more robust user state management capabilities. When planning to integrate Migrate7 with SCCM, a few considerations should be taken to prepare.

1. Will we have a single Migrate7 data store for business?
2. Should the data store be a dedicated resource or an existing SCCM resource?
3. Should we do local stores on each client vs. network share?
4. How many unique user state configuration files will we need to create to support the various profiles?
5. Should we allow users to access the Migrate7 client from their desktop?
6. Do we want to extract/backup all local user state profiles, only the logged in user, or only ones that have been used? Do we want to exclude any users?
7. Do we need to password protect the personalities within the Data Stores/s?

Once these questions and the general design have been planned out Migrate7 can be deployed and managed with SCCM. SCCM can be used to deploy and configure the Migrate7 client to target machines plus deploy packages with agent command line switches to initiate user state activities. While all of this is accomplished with standard SCCM packages, collections, and advertisements, the Migrate7 Data Store/s do need to be set up in advance and a user migration template must be created. The number of Data Stores directly impacts the complexity of automating user state migration but does enable support for a broad range of SCCM configuration scenarios. The diagram below shows a vanilla SCCM architecture with a single Migrate7 Data Store.



Getting Started

This section provides instructions for preparing the Migrate7 environment to then integrate with SCCM.

If you already have an existing Migrate7 environment you can skip this section and proceed to 'Deploying Migrate7 with SCCM' on page 9.

Prerequisites

The following assets and preparation are required to successfully integrate Migrate7 with SCCM, they include:

1. Migrate7 software
2. Sufficient privileges to install software and create/access Data Store

Preparing the Migrate7 Environment

To prepare Migrate7 for integration with SCCM there are three primary steps that need to be completed.

1. Install Migrate7
2. Create Data Store/s
3. Create User Migration Templates

Install Migrate7

Migrate7 installs two components - the Server and the Client. The Server contains the Client installation files and the reference files for migrating application settings. The Client component is automatically installed and invoked when the SCCM package is distributed. The Migrate7 Client acts as the agent to facilitate the personality extraction, backup and injection processes.

For the purpose of this document, Migrate7 Server should be installed on an established SCCM Server; typically this is done on a dedicated Server or Distribution Point. For more information on the Migrate7 Server installation and the Data Store, see the **Migrate7 Deployment Guide** included in the Migrate7 installation.

The following steps install the Migrate7 files, directories and agents on the device established as the Server, and install the Migrate7 Client agent on the machine that will be used to configure the migration templates.

1. Run the file **ServerSetupLM.exe** from your Migrate7 CD or your extracted zip file location. This will start the Migrate7 Server installation wizard.
2. On the Welcome screen, click **Next**.

3. On the License Agreement screen, read the agreement and click **I Accept** to continue.
4. On the Registration screen, enter the administrator's name, company name, and Migrate7 serial number. Then click **Next**.
5. On the Choose Destination Location screen, click **Next** to install to the default location C:\Migrate7 Installation, or the browse button to select an alternate location to install the Server.
6. Wait for the Migrate7 Server files to install.
7. On the Installation Complete screen, select **Install Client** and click **Finish**.
8. This will close the Migrate7 Server installation and launch the Migrate7 Client setup wizard.
9. On Welcome screen, click **Next**.
10. On the Choose Destination Location screen leave at default, click **Next**.
11. On the Select Program Manager Group screen, select the desired program group or simply click **Next** to accept the default.
12. Wait for the Migrate7 Client to install.
13. When the Desktop Shortcut dialog appears, click **Yes**.
14. On the ReadMe File screen, click **OK**.
15. On the Installation Complete screen, click **Finish**.

The Migrate7 Server and Client components are now installed.

Create Data Store/s

The Migrate7 User State Data Store Setup serves as the central location where personalities and configuration information will be stored as well as the installation source for the Migrate7 client. When you use SCCM to deploy Migrate7 software, you set up the source user profile directory with the Migrate7 User State Data Store Setup utility.

When using Configuration Manager to deploy the Migrate7 client, we recommend creating a client source directory on your site server/s to decrease the size of the Migrate7 installation package. The location where you perform the administrative installation becomes the location of the package source directory.

The account performing file backups or personality restores must have full access to the Data Store shared folder. If Migrate7 is launched and managed through a SCCM 2007 service account, only that account will need these rights.

***Note: Personality Protection** - In many cases, users will need to access their personality to use Migrate7's Restore Files functionality. To prevent users from accessing other personalities, each stored personality should be password protected. This can be done automatically by using the /Password command line switch or by setting the appropriate policy in the Migrate7 configuration. The /Password command is generic for a cfg file and not unique per personality, when automating through SCCM this could be used to ensure only the service account is extracting/injecting stored personalities.*

Data Store folder and specifying security privileges:

The following steps assume the Server is installed in the default location of C:\Migrate7 Installation. If another installation location was specified, substitute "C:" below with the alternate Server location you selected.

1. From the system where the Migrate7 Server was installed open **My Computer**.
2. Double-click **C:**
3. Find the folder called **Migrate7 Installation**. Right-click on the folder and select **Sharing and Security...**
4. The **Migrate7 Installation Properties** dialog appears with the **Sharing** tab selected.
5. On the **Sharing** tab, select the radio button **Share this folder**.

6. In the **Share name** field, specify a share name for the folder. This guide assumes the share name is **Migrate7**.
7. Press the **Permissions...** button.
8. The **Permissions for Migrate7 Installation** dialog appears.
9. Confirm that users running Migrate7 have **Full Control** of the Migrate7 Server.
10. Click **OK**.
11. Select the **Security** tab.
12. Under **Group or user names** specify **Full Control** for each users or groups running Migrate7.
13. Click **OK**.

The Migrate7 Data Store has now been created. To learn more about deployments and setting up the source directory for Migrate7 software, reference the *Migrate7 Deployment Guide*.

Create User Migration Template/s

A Migrate7 configuration consists of three files:

1. The .rul file contains the File Rules
2. The .ptt file contains a list of the selected application content.
3. The .cfg file contains any changed policies, Registry Rules, and the location of the Data Store.

Tip: You can create migration templates for different profiles, desktop roles, and data stores. You must have one template defined prior to automating user state migration tasks with SCCM.

Migrate7 creates the three files automatically when a user migration configuration is saved. All files must have the same name and be in the same folder for your configuration to execute successfully. By default, the files are named SE (SE.cfg, SE.rul, SE.ptt) and are stored in the Migrate7 shared directory. You must have a valid user migration configuration prior to automating with SCCM.

Tip: You can save user migration templates based on usage and have multiple templates in same directory. Ie se.cfg, seLOB1.cfg, seLOB2.cfg, etc...

To configure Migrate7 for each logical group of clients complete the following steps:

1. Double-click the Migrate7 shortcut on your Windows Desktop or open from Program Files. The Migrate7 Client opens.
2. Select **Extract Personality** view, and click on the **Select for Extraction** tab.
3. Select the application content, and create any File Rules or Registry Rules. Please see the **Migrate7 Deployment Guide** for more information.
4. Open the **File** menu, and click **Save** to save the configuration file.
5. Open the **File** menu, and select **Exit**.

This saved configuration can now be used as a point of reference when configuring other groups. Leading IT organizations create configuration files for user groups based on the application set or image used by each group.

With the Migrate7 base infrastructure deployment complete you can now integrate the solution with SCCM to deploy Migrate7 client agents to target machines; inject Migrate7 user state tasks into OSD and MDT task sequences; and improve user state backups, restores, and migration activities.

Deploying Migrate7 with SCCM

When using the agent based option with Migrate7 it will be necessary to deploy the agent to target clients which can be fully automated using SCCM. The following sections describe the prerequisites and step-by-step instructions to deploy the Migrate7 agent using SCCM.

Prerequisites

The following preparation items are required to successfully integrate and deploy Migrate7 with SCCM, they include:

1. Existing and healthy SCCM infrastructure
2. Setup of Migrate7 software, Data Store, and user migration template
3. Administrative permissions to SCCM and Migrate7

Deployment Step-by-step

Deploying the Migrate7 agent and managing user profile extractions, backups, and restores can all be automated with SCCM. The following information provides step-by-step guidance to perform the following tasks:

1. Create Migrate7 agent source file repositories
2. Create Migrate7 agent package
3. Create Migrate7 user profile extraction package
4. Create Migrate7 user profile backup package
5. Confirming Deployments

Create Migrate7 Agent Source

To create the Migrate7 client installation source

1. Create a directory on your preferred Configuration Manager Server to house the Migrate7 client installation files.
2. Navigate to the Migrate7 User State Data Store folder created during the Migrate7 User State Data Store Setup.
3. Copy **ClientInstall.msi**, **SE.cfg**, **SE.rul**, and **SE.ptt** to the directory created in step one.
4. Edit **se.cfg** in notepad. Ensure the line **Data Store Location** points to the UNC path of your Data Store share (e.g., \\servername\Migrate7\personalities).

Create Migrate7 Agent Package

After creating the client source directory using the procedure above, you create the SCCM software installation package. An SCCM package contains the files and instructions that SCCM uses to distribute the software and advertise the package. The Deployment wizard creates the files and instructions, but SCCM must be configured to use these files.

To create a software installation package using SCCM

- 1 (Windows XP *or* Windows Vista/7) Click Start menu > All Programs > Microsoft System Center > Configuration Manager 2007 > ConfigMgr Console.
- 2 In the Configuration Manager Console window, expand Software Distribution
- 3 Right-click Packages > Distribute > Software.
- 4 In the Distribute Software wizard, click Next.
- 5 In the Package dialog box, select Create a New Package and Program without a Definition File. Click Next.
- 6 In the Package Identification dialog box, enter the information for Name, Version, Publisher, Language and any comments. Click Next.
- 7 In the Source Files dialog box, make selections to where SCCM retrieves the files and how it manages them. Click Next.

Note: In this procedure, "Always Obtain Files from a Source Directory" was selected.

- 8 In the Source Directory dialog box, specify the directory where the client source files are stored. Click Next.
- 9 In the Distribution Points dialog box, select the distribution point(s). This is the location from which the software package will be deployed to the target systems. Click Next.
- 10 In the Program Identification dialog box, enter the name of your program. This is the name that displays in Add or Remove Programs in the Control Panel. In the Command Line field, enter **msiexec.exe /qn ALLUSERS=2 APPLICATIONFOLDER=C:\Migrate7Client DESKTOPSHORTCUT=0 /m MSIGPSCO /i\\<UNCPATH>\tranxition\Migrate7\clientinstall.msi** Click Next.

Note: To install for all users use *ALLUSERS=1*, to install for only SCCM service account use *ALLUSERS=2*

11 In the Program Properties dialog box, Program Can Run drop-down list, select how you want your program to install. Your choices are:

- Only When a User is Logged On
- **Whether or Not a User is Logged On**
- Only When No User is Logged On

12 In the After Running drop-down list, select an action to take after the program has deployed. Your choices are:

- No Action Required
- Program Restarts Computer
- ConfigMgr Restarts Computer
- ConfigMgr Logs User Off

Click Next.

13 In the Advertise Program dialog box, select Yes to advertise the program. Click Next.

14 In the Select a Program to Advertise dialog box, select the package you want to advertise. Click Next.

15 In the Select Program ► Advertisement Target dialog box, select the collection to which you want to advertise, or create a new collection for target systems that require the agent.

16 In the Select Program ► Advertisement Name dialog box, enter or change the name of your advertisement. Add any comments to further describe the advertisement. Click Next.

17 In the Select Program ► Advertisement Subcollection dialog box, select one of the following options:

- Advertise this Program to an Existing Collection
- Create a New Collection and Advertise this Program to It

18 Click Next (Assumes previous selection was advertise to existing collection).

19 In the Select Program ► Advertisement Schedule dialog box, if desired, set options to advertise your program at a specific date and time, or set expiration date. Click Next.

20 In the Select Program ➤ Assign Program dialog box, select one of the following options:

- If the installation process is mandatory, select Yes, Assign the Program.
- If the installation process is optional, select No, Do Not Assign the Program

Click Next.

21. In the Summary dialog box, verify your advertisement information. Use the back buttons to make any changes. To finish, click Next.

The Migrate7 agent installation package and advertisement to deploy package have now been completed.

Once the agent infrastructure is installed users can also elect to automate User Profile extraction and restores as well as automating the user migration process during OSD and MDT deployments.

Create User Profile Extraction Package

After installing the Migrate7 client software using the procedure above, you can create an SCCM software distribution program to perform a personality extraction.

To create an Migrate7 extraction package using SCCM

- 1 Click Start menu ➤ All Programs ➤ Microsoft System Center ➤ Configuration Manager 2007 ➤ ConfigMgr Console.
- 2 In the Configuration Manager Console window, expand Software Distribution
- 3 Right-click Packages ➤ Distribute ➤ Software.
- 4 In the Distribute Software wizard, click Next.
- 5 In the Package dialog box, select Create a New Package and Program without a Definition File. Click Next.
- 6 In the Package Identification dialog box, enter the information for Name, Version, Publisher, Language and any comments. Click Next.
- 7 In the Source Files dialog box, select the option "This package does not contain any source files". Click Next.
- 8 In the Program Identification dialog box, enter the name of your program. This is the name that displays in Add or Remove Programs in the Control Panel. In the Start In field, enter **C:\Migrate7Client**. In the Command Line

field, enter **se.exe /autoextract /allusers /hidestatus /nocancel**. Click Next.

Note: To override the default Data Store defined in the configuration file use the /datastore switch. Ie **se.exe /autoextract /allusers /hidestatus /nocancel /datastore "\\server\path"**

9 In the Program Properties dialog box, Program Can Run drop-down list, select how you want your program to install. Your choices are:

- Only When a User is Logged On
- **Whether or Not a User is Logged On**
- Only When No User is Logged On

Note: In this procedure, "Whether or Not a User is Logged On" was selected.

10 In the After Running drop-down list, select an action to take after the program has deployed. Your choices are:

- **No Action Required**
- Program Restarts Computer
- ConfigMgr Restarts Computer
- ConfigMgr Logs User Off

Click Next.

11 In the Advertise Program dialog box, select Yes to advertise the program. Click Next.

12 In the Select a Program to Advertise dialog box, select the package you want to advertise. Click Next.

13 In the Select Program ► Advertisement Target dialog box, select the collection to which you want to advertise, or create a new collection. Ensure that the collection members have the Migrate7 client installed, else the advertisement will fail on those computers.

14 In the Select Program ► Advertisement Name dialog box, enter or change the name of your advertisement. Add any comments to further describe the advertisement. Click Next.

15 In the Select Program ► Advertisement Subcollection dialog box, select one of the following options:

- Advertise this Program to an Existing Collection
- Create a New Collection and Advertise this Program to It

16 Click Next.

17 In the Select Program ► Advertisement Schedule dialog box, if desired, set options to advertise your program at a specific date and time, or set expiration date. Click Next.

18 In the Select Program ► Assign Program dialog box, select one of the following options:

- If the installation process is mandatory, select Yes, Assign the Program.
- If the installation process is optional, select No, Do Not Assign the Program

Click Next.

22. In the Summary dialog box, verify your advertisement information. Use the back buttons to make any changes. To finish, click Next.

Create User Profile Backup Package

After installing the Migrate7 client software and performing a personality extraction using the procedures above, you can create an SCCM software distribution program to perform a scheduled personality backup.

Ensure that the collection you create contain only members who have the Migrate7 client installed and have performed an initial extraction.

To create an Migrate7 Personality Backup package using SCCM

- 1 Click Start menu ► All Programs ► Microsoft System Center ► Configuration Manager 2007 ► ConfigMgr Console.
- 2 In the Configuration Manager Console window, expand Software Distribution
- 3 Right-click Packages ► Distribute ► Software.
- 4 In the Distribute Software wizard, click Next.
- 5 In the Package dialog box, select Create a New Package and Program without a Definition File. Click Next.

- 6 In the Package Identification dialog box, enter the information for Name, Version, Publisher, Language and any comments. Click Next.
- 7 In the Source Files dialog box, select the option "This package does not contain any source files". Click Next.
- 8 In the Program Identification dialog box, enter the name of your program. This is the name that displays in Add or Remove Programs in the Control Panel. In the Start In field, enter **C:\Migrate7Client**. In the Command Line field, enter **se.exe /autoextract /allusers /hidestatus /nocancel**. Click Next.
- 9 In the Program Properties dialog box, Program Can Run drop-down list, select how you want your program to install. Your choices are:
 - Only When a User is Logged On
 - **Whether or Not a User is Logged On**
 - Only When No User is Logged On

Note: In this procedure, "Whether or Not a User is Logged On" was selected.

- 10 In the After Running drop-down list, select **No Action Required** as the action to take after the program has deployed. Click Next.
- 11 In the Advertise Program dialog box, select **Yes** to advertise the program. Click Next.
- 12 In the Select a Program to Advertise dialog box, select the package you want to advertise. Click Next.
- 13 In the Select Program ► Advertisement Target dialog box, select the collection to which you want to advertise, or create a new collection. Ensure that the collection members have the Migrate7 client installed and have performed an initial extraction; else the extraction will fail on those computers.
- 14 In the Select Program ► Advertisement Name dialog box, enter or change the name of your advertisement. Add any comments to further describe the advertisement. Click Next.
- 15 In the Select Program ► Advertisement Subcollection dialog box, select one of the following options:

- Advertise this Program to an Existing Collection. Any existing collection selected should include only those machines that have healthy SCCM Agents AND the Migrate7 client agent installed.
- Create a New Collection and Advertise this Program to It

16 Click Next.

17 In the Select Program ► Advertisement Schedule dialog box, if desired, set options to advertise your program at a specific date and time, or set expiration date. Click Next.

18 In the Select Program ► Assign Program dialog box, select one of the following options:

- If the installation process is mandatory, select Yes, Assign the Program.
- If the installation process is optional, select No, Do Not Assign the Program

Click Next.

19 In the Summary dialog box, verify your advertisement information. Use the back buttons to make any changes. To finish, click Next.

To create a recurring schedule for Migrate7 Personality Backup package

- 1 Click Start menu ► All Programs ► Microsoft System Center ► Configuration Manager 2007 ► ConfigMgr Console.
- 2 In the Configuration Manager Console window, expand Software Distribution
- 3 Select Advertisements
- 4 In the right pane, right-click your Migrate7 Personality Backup package and select Properties.
- 5 Select the Schedule tab
- 6 Select **Assign to the following schedule** and click the **Schedule** button
- 7 Enter your desired start time and reoccurrence frequency and click **OK** twice.

Confirming Deployment/s

The following list summarizes some of the resources and methods available for monitoring the Migrate7 agent and package deployment status.

1. Review Advertisement Status Messages for the Agent Installation, Personality Extraction and Backup jobs. Identify any failures.
2. Review the report "Status of a specific advertisement"
3. For failed Agent Installation:
 - a. Create collection of all machines that failed to install the Migrate 7 agent and re-run advertisement to install if failed previously. Use the advertisement status message as the basis for the collection criteria.
4. For failed user personality extraction jobs:
 - a. Confirm personality extraction process generates success/failure status messages
 - b. Create status filter query to email technician when personality extraction process fails
 - c. Identify missing pre-requisites (disk space, Migrate 7.0 agent, etc.)
5. For failed user backup jobs:
 - a. Confirm personality extraction process generates success/failure status messages
 - b. Create status filter query to email technician when personality extraction process fails
 - c. Identify missing pre-requisites (disk space, Migrate 7.0 agent, etc.)
6. For additional logging information on the local machine, go to c:\documents and settings\all users\application data\transition\migrate 7. Each time a job is run, a separate log entry will be created showing the status of the extraction and backup process depending on which was run. Also, within the personality folder of the data source, a log is also created showing the progress made.

Deployment Tips

Managing user profile migrations in medium to large sized business with Migrate7 requires proper planning of the Data Stores, user migration templates, solution usage, and monitoring.

Migrate7 includes native logging to track user profile extractions, backups, and restores which can be used to troubleshoot problem migrations or validate migration steps. This is further complemented using DCM IT can validate the Migrate7 footprint and configurations throughout the business.

Migrate7 Agent Logging

The Migrate7 Log file display can be customized by accessing Preferences through the Edit menu and selecting Preferences and the Log File tab. Choose the level of log file detail from the drop down field for Error log, Warning log, Informational log, Verbose log and Trace log. This setting is saved to the se.cfg file.

Migrate7 logs can be set to be displayed following each extraction, injection or personality backup. Uncheck the "display log on completion" check box if this is not desired behavior.

The name of the log file contains the computer name and the date and time of the extraction, injection, backup, or restore. Log files are located in the personality folder of each individual user.

Assessing Migrate7 with DCM

Users can add DCM rules to validate Migrate7 installation and status. The following setting rule could be added to existing DCM baselines to validate Migrate7 is at the correct client version across target machines.

Registry Rule

Path: HKEY_LOCAL_MACHINE\SOFTWARE\Tranxition Corporation\Personality
Tranxport Professional\

Key: Version

Expected Value: >=7.5

Additional registry values of interest that may want to be monitored are in HKLM\Software\Tranxition Corporation\Personality\Transport Professional\Settings directory, including last log, location, personalities and plugins. For example the last log can be used to determine the last time a backup or extraction was run.

Integrating Migrate7 with SCCM OSD and MDT

Integrating Migrate7 with your existing OSD and MDT environment provides the ability to install the agent client during time of new installations, system refreshes, or cloning as well as the option to automatically extract/backup and inject/restore. The information below outlines how to integrate Migrate7 tasks with your SCCM OSD task sequences.

Prerequisites

The following preparation items are required to successfully integrate and deploy Migrate7 with SCCM OSD and MDT, they include:

1. Existing and healthy SCCM infrastructure
2. Setup of Migrate7 software, Data Store, and user migration template
3. Administrative permissions to SCCM and Migrate7
4. Migrate7 agent package created

Adding Migrate7 client to your existing OSD task sequences

To add Migrate7 to your existing SCCM OSD deployments use the following steps:

- 1 Click Start menu > All Programs > Microsoft System Center > Configuration Manager 2007 > ConfigMgr Console.
- 2 In the Configuration Manager Console window, expand Site Database > Computer Management > Operating System Deployment > Task Sequences
- 3 Right-click the Task Sequence you wish to modify and select Edit
- 4 On the Task Sequence Editor pane, Click **Add > General > Install Software**
- 5 On the Properties tab of the new Install Software task sequence, enter the desired name and description for the task sequence step.
- 6 Select **Install a single application**, browse to the Migrate 7 agent package and select the Silent Install
- 7 Ensure the Migrate7 task sequence step is performed after the Apply operating system image step.

The Migrate7 agent installation has now been added to an OSD task sequence.

Auto Extract User Profiles Task Sequence – Existing Task Sequence

To add a Migrate7 user profile extraction task to an existing task sequence follow the steps outlined below.

- 1 Click Start menu >All Programs > Microsoft System Center > Configuration Manager 2007 >ConfigMgr Console.
- 2 In the Configuration Manager Console window, expand Site Database >Computer Management >Operating System Deployment >Task Sequences
- 3 Right-click the Task Sequence you wish to modify and select Edit
- 4 On the Task Sequence Editor pane, Click **Add >General >Run Command Line**
- 5 On the Properties tab of the new Run Command Line task sequence, enter the desired name and description for the task sequence step.
- 6 In the command line box, enter **C:\Migrate7Client\se.exe /autoextract /ALLUSERS /hidestatus /nocancel**
- 7 Check the box for **Run this step as the following account** and set the credentials for the applicable administrator account.
- 8 Click **Apply** and **OK**.

The Migrate7 user extraction task has now been added to an OSD task sequence.

Auto Extract User Profiles Task Sequence – New Task Sequence

To add a Migrate7 user profile extraction task to a new task sequence follow the steps outlined below.

- 1 Click Start menu >All Programs > Microsoft System Center > Configuration Manager 2007 >ConfigMgr Console.
- 2 In the Configuration Manager Console window, expand Site Database >Computer Management >Operating System Deployment >Task Sequences
- 3 Right-click the Task Sequence folder and select **New >Task Sequence**
- 4 On the Create New Task Sequence window, select **Create a new custom task sequence**. Click Next.
- 5 On the Task Sequence Information screen enter the desired name and comment for the task sequence. Click Next to finish.
- 6 Edit the task sequence that was just created

- 7 On the Task Sequence Editor pane, Click **Add >General >Run Command Line**
- 8 On the Properties tab of the new Run Command Line task sequence, enter the desired name and description for the package.
- 9 In the command line box, enter **C:\Migrate7Client\se.exe /autoextract /ALLUSERS /hidestatus /nocancel**
- 10 Check the box for **Run this step as the following account** and set the credentials for the applicable administrator account.
- 11 Click **Apply** and **OK**.

The Migrate7 user extraction task has now been added to a new OSD task sequence.

Auto Inject User Profile Task Sequence – Existing Task Sequence

To add a Migrate7 user profile injection task to an existing task sequence follow the steps outlined below.

- 1 Click Start menu >All Programs > Microsoft System Center > Configuration Manager 2007 >ConfigMgr Console.
- 2 In the Configuration Manager Console window, expand Site Database >Computer Management >Operating System Deployment >Task Sequences
- 3 Right-click the Task Sequence you wish to modify and select Edit
- 4 On the Task Sequence Editor pane, Click **Add >General >Run Command Line**
- 5 On the Properties tab of the new Run Command Line task sequence, enter the desired name and description for the package.
- 6 In the command line box, enter **C:\Migrate7Client\se.exe /autoinject /ALLUSERS /hidestatus /nocancel**
- 7 Check the box for **Run this step as the following account** and set the credentials for the applicable administrator account.
- 8 Click **Apply** and **OK**.

The Migrate7 user injection task has now been added to an OSD task sequence.

Auto Inject User Profiles Task Sequence – New Task Sequence

To add a Migrate7 user profile injection task to a new task sequence follow the steps outlined below.

- 1 Click Start menu ► All Programs ► Microsoft System Center ► Configuration Manager 2007 ► ConfigMgr Console.
- 2 In the Configuration Manager Console window, expand Site Database ► Computer Management ► Operating System Deployment ► Task Sequences
- 3 Right-click the Task Sequence folder and select **New ► Task Sequence**
- 4 On the Create New Task Sequence window, select **Create a new custom task sequence**. Click Next.
- 5 On the Task Sequence Information screen enter the desired name and comment for the task sequence. Click Next to finish.
- 6 Edit the task sequence that was just created
- 7 On the Task Sequence Editor pane, Click **Add ► General ► Run Command Line**
- 8 On the Properties tab of the new Run Command Line task sequence, enter the desired name and description for the package.
- 9 In the command line box, enter **C:\Migrate7Client\se.exe /autoinject /ALLUSERS /hidestatus /nocancel**
- 10 Check the box for **Run this step as the following account** and set the credentials for the applicable administrator account.
- 11 Click **Apply** and **OK**.

The Migrate7 user injection task has now been added to a new OSD task sequence.

Auto Backup User Profile Task Sequence – Existing Task Sequence

To add a Migrate7 user profile backup task to an existing task sequence follow the steps outlined below.

- 1 Click Start menu ► All Programs ► Microsoft System Center ► Configuration Manager 2007 ► ConfigMgr Console.
- 2 In the Configuration Manager Console window, expand Site Database ► Computer Management ► Operating System Deployment ► Task Sequences
- 3 Right-click the Task Sequence you wish to modify and select Edit
- 4 On the Task Sequence Editor pane, Click **Add ► General ► Run Command Line**
- 5 On the Properties tab of the new Run Command Line task sequence, enter the desired name and description for the package.
- 6 In the command line box, enter **C:\Migrate7Client\se.exe /AUTOBACKUP /ALLUSERS /hidestatus /nocancel**
- 7 Check the box for **Run this step as the following account** and set the credentials for the applicable administrator account.
- 8 Click **Apply** and **OK**.

The Migrate7 user backup task has now been added to an existing OSD task sequence.

Auto Backup User Profiles Task Sequence – New Task Sequence

To add a Migrate7 user profile backup task to a new task sequence follow the steps outlined below.

- 1 Click Start menu ► All Programs ► Microsoft System Center ► Configuration Manager 2007 ► ConfigMgr Console.
- 2 In the Configuration Manager Console window, expand Site Database ► Computer Management ► Operating System Deployment ► Task Sequences
- 3 Right-click the Task Sequence folder and select **New ► Task Sequence**
- 4 On the Create New Task Sequence window, select **Create a new custom task sequence**. Click Next.
- 5 On the Task Sequence Information screen enter the desired name and comment for the task sequence. Click Next to finish.
- 6 Edit the task sequence that was just created

- 7 On the Task Sequence Editor pane, Click **Add >General >Run Command Line**
- 8 On the Properties tab of the new Run Command Line task sequence, enter the desired name and description for the package.
- 9 In the command line box, enter **C:\Migrate7Client\se.exe /autoinject /ALLUSERS /hidestatus /nocancel**
- 10 Check the box for **Run this step as the following account** and set the credentials for the applicable administrator account.
- 11 Click **Apply** and **OK**.

The Migrate7 user backup task has now been added to a new OSD task sequence.

Advanced User Profile Migration

When using Migrate7 users have the option to define very granular state migration policies and rules to support a broad range of environmental needs. These policies and rules are then used with the extraction/injection and backup/restore features to enable enterprise management of user profiles. The following information highlights some of the potential optimized workflow scenario's one may want to consider when using Migrate7 with SCCM.

User Extraction and Injection Scenarios

- Extracting profile for currently logged in user
- Extracting profile/s for users not logged on
- Extracting profiles for multiple users
- Converting user profiles from old to new domain
- Assigning default passwords
- Exclude users from profile extraction
- Excluding unused users from profile extraction
- Enable profile auto-backup on restore
- Migrate local and/or domain users
- Managing migrations with multiple Data Stores

For a full list of Migrate7 automation options and command line switches please refer to the Migrate Automation Guide.

For a full list of Migrate7 configuration options for migration policies and rules please refer to the Migrate7 Users Guide.

Additional Resources

The links below are to Migrate7 and SCCM resources that may be of interest or useful when integrating the two technologies.

Migrate 7 Resources

Migrate7 Deployment Guide

<http://www.tranxition.com/resources/pdf/Migrate7%20Deployment%20Guide.pdf>

Migrate7 Reference Guide for Automating Migrate7

<http://www.tranxition.com/resources/pdf/Automating%20Migrate7.pdf>

Migrate7 Data Migration Using File Rules

<http://www.tranxition.com/resources/pdf/Migrate7%20Rule%20Based%20Migration.pdf>

Microsoft Links

System Center Configuration Manager Home Page

<http://www.microsoft.com/systemcenter/en/us/configuration-manager.aspx>

System Center Configuration Manager TechCenter

<http://technet.microsoft.com/en-us/systemcenter/cm/default.aspx>

Microsoft Deployment Toolkit Accelerator Page

<http://technet.microsoft.com/en-us/solutionaccelerators/dd407791.aspx>

Command Line Argument Quick Reference

The following table summarizes the available command line arguments for the Migrate7 se.exe application. For detailed information on usage and guidance please see the Migrate7 automation guide.

Argument	Short Description
/AUTOEXTRACT	The /AUTOEXTRACT command, if used without another supported extraction command switch will automatically perform a personality extraction of the user that is currently logged on to the computer.
/AUTOINJECT	If the /AUTOINJECT command is used without another supported injection command, the switch will automatically perform a personality injection for the user that is currently logged on to the computer.
/PASSWORD <password>	The /PASSWORD command is used to automatically assign a password to a personality during extraction and injection
/CONFIG "PATH/FILE"	The /CONFIG command-line argument is used to specify a Configuration file when performing an automatic extraction or injection. The form of the argument is: /CONFIG "path\file".
/IMPORT	The /IMPORT command-line argument is used to import a personality.
/SOURCE	The /SOURCE command is used to specify the Computer name that was associated with the extracted personality. This command is typically used in combination with the /ALLUSER command line switch and only on Injection.
/INCLUDEUSER	The /INCLUDEUSER command will extract/inject the personalities for each user that is specified.
/ALLUSERS	The /ALLUSERS command will extract/inject all existing users on/from the computer.
/EXCLUDEUSER domain\username [additional users]	The /EXCLUDEUSER command allows you to exclude specified users from being extracted or injected.
/EXCLUDELOCAL	The /EXCLUDELOCAL command allows you to exclude local users from being extracted.
/EXCLUDEUNUSED <Days>	The /EXCLUDEUNUSED command allows you to exclude user profiles that have not been used in a specified number of days.
/DOMAIN olddomain:newdomain	The /DOMAIN command allows you to redirect injected users from an old domain name to a new domain name.
/DATASTORE "\\server\personalities "	This /DATASTORE command can be used to specify an alternate location for the LiveManage data store. The path to the data store is specified following the command line switch
/EXCLUDEDISKS disk1;disk2;disk3	This /EXCLUDEDISKS command enables you to specify letters associated with drives that you do not want LiveManage to inject data to during the personality injection.
/INJECTTOLOGGEDINUSER	This /INJECTTOLOGGEDINUSER command enables you to force an injection of a user's personality to the user that is logged on to the target machine even if the username does not match the username of the user that is being injected.
/AUTOBACKUP	The /AutoBackup command allows you to backup changes to a specified personality via command line.
/EXCLUDEDOMAIN	The /ExcludeDomain command is used exclude users from being injected or extracted
/NOCANCEL	The /NoCancel command is used to hide the LiveManage cancel button that is displayed on the progress bar during extraction.
/HIDESTATUS	The /HideStatus command is used to hide the LiveManage progress bar for extraction and injection.

COPYRIGHT AND PATENT INFORMATION

©2010 Tranxition Corporation.
All Rights Reserved.

Protected by US Patent 6,728,877 and European Patent 1173809.

The information in this document is subject to change without notice and should not be construed as a commitment by Tranxition Corporation. Tranxition Corporation assumes no responsibility for any errors that might appear in this document.

The software described in this document is furnished under a license and may be used or copied only in accordance with the terms of such license. No responsibility is assumed for the use or reliability of software or equipment that is not supplied by Tranxition Corporation or its affiliated companies.

Restricted Rights: Use, duplication or disclosure by the U.S. Government is subject to restrictions as set forth in subparagraph (c) (1) (ii) of the Rights in Technical Data and Computer Software clause at DFARS 252.227 7013. Migrate7 and the Tranxition logo are trademarks of Tranxition Corporation. Microsoft Windows NT, Windows 2000, Windows XP, Windows Vista, and Windows 7 are registered trademarks of Microsoft Corporation. All other trademarks and registered trademarks are the property of their respective holders.