

Automating Migrate7

Migrate7 v8.0 Command-line Reference





Table of Contents

1. Introduction.....	6
Purpose	6
Scope	6
Assumptions	6
Intended Audience	6
2. Using the Command-Line Interface	7
Overview	7
Automating Personality Migrations	8
3. Installer Command-Line Parameters	9
Introduction	9
Switches	9
COMPANY_NAME	9
DESKTOPSHORTCUT	9
PIDKEY	9
QUIET	10
SHAREPOINT_INSTALL_DIR	10
UNINSTALL	10
USER_NAME	10
Complete Examples	11
Automated Installation	11
Automated Uninstallation	11
4. Application Command-Line Parameters	12
Introduction	12
Basic Command Line Parameters	12
AUTOBACKUP	13
AUTOEXTRACT	14
AUTOINJECT	15
CONFIG	16
DATASTORE	17
EXCLUDEDISKS	18
HTTP	19
PASSWORD	20
SOURCE	21
MAPPINGFILE	22
User-Related Command Line Parameters	23



ALLUSERS.....	24
DOMAIN	25
EXCLUDEDOMAIN	26
EXCLUDELOCAL	27
EXCLUDEUSER	28
INCLUDEUSER.....	29
INJECTTOLOGGEDINUSER	31
Advanced Command Line Parameters	32
DISPLAYERRORCODE	33
HIDESTATUS	34
IMPORT	35
NOCANCEL.....	36
5. HTTP Command Line Usage	37
Introduction	37
Command Line Definitions	37
URL	37
UniqueString	37
Overwrite	37
Verifycert.....	38
Example Command Line using /HTTP	38
Extraction	38
Injection	38
6. Automation Examples.....	39
7. Processing Logged On Users.....	40
Description	40
Process Examples	40
Extract.bat File Example	40
Extract.bat File Definition (By Line).....	41
Inject.bat File Example	41
Inject.bat File Definition (By Line)	41
8. Processing Not-Logged On Users.....	42
Description	42
Process Examples	42
Extraction Example (Invoking the Extract.bat file).....	42
Extract.bat File when user is not logged in	43
Extract.bat File when user is not logged in	43
Injection Example (Invoking the Inject.bat file)	43
Inject.bat File Example when user is not logged in	43
Inject.bat File Definition (By Line)	44



9. Processing Multiple Users	45
Description	45
Process Examples	45
Extraction Example (Invoking the Extract.bat file)	46
Extract.bat File Example to Extract Multiple Users	46
Extract.bat File Definition (By Line).....	46
Injection Example (Invoking the Inject.bat file) to Inject Multiple Users.....	47
Inject.bat File Example to Inject Multiple Users	47
10. Moving Users Between Domains	48
Description	48
Process Examples	48
Extraction Example (Invoking the Extract.bat file)	49
Extract.bat File Example for Moving Users between Domains	49
Injection Example (Invoking the Inject.bat file)	49
Inject.bat File Example for Moving Users between Domains	50
11. Using Passwords in Migrations	51
Description	51
Process Examples	51
Extraction Example (Invoking the Extract.bat file).....	51
Extract.bat File Example USING A PASSWORD.....	52
Injection Example (Invoking the Inject.bat file) Using a Password	52
Inject.bat File Example Using a Password	52
12. Injection Mapping Files	53
Description	53
Mapping File Structure	53
Creating Mapping Files Using the Injection Mapping Tool	53
Creating a New Mapping File	54
Adding Source Computers to a Mapping File.....	54
Importing Source and Target Computers.....	54
13. Response files	55
Description	55
Response File Example	55
Example.....	55
14. Migrate7 Exit Codes	56
Migrate7 Installation Exit Codes	56
Migrate7 Application Exit Codes	58
15. Using Migrate7 With a Scheduler	62
16. Copyright and Patent Information	64





1. Introduction

Purpose

This document describes how Migrate7 can be used in an automated fashion without requiring any user intervention, something that's essential to be able to perform large-scale migrations.

Migrate7 provides a rich set of functionality through command-line parameters that allow you to perform both extractions and injections of user state which makes it possible to incorporate Migrate7 in Operating System Deployment scenarios.

It's possible to use this in MS-DOS-style batch files, NT-style .cmd files, PowerShell scripts or as part of a desktop management suite if you have that deployed in your environment. This document doesn't make any assumptions about your environment other than that you have at least one Windows domain.

This document explains the uses of the various command line parameters and provides examples of batch files and network login scripts.

Scope

This document applies to functionality within Migrate7. The batch files use standard MS-DOS commands and the login script examples use standard Windows NT login syntax.

Assumptions

This is a technical discussion and it is presumed that the reader is proficient with standard Windows and networking concepts. It is also assumed that the reader is familiar with and has a working knowledge of Migrate7. For details on how to use Migrate7, please see the Migrate7 User's Guide.

Intended Audience

This document is intended for administrative users of Migrate7 and anyone involved with the deployment of the software.



2. Using the Command-Line Interface

Overview

Migrate7 provides a rich set of command-line parameters that make it possible to fully automate both migrations and ongoing use of Migrate7. Scenarios where this is useful include:

- Migrating users as part of machine deployment; it's possible to extract the user state from the user's current system before starting the OS deployment of the new system and then finish up by injecting the user state as the last step of the OS deployment
- Provide ongoing recovery services by doing an initial extraction and then regular backups of a user's system. If something goes wrong with the system, it can be reimaged/reinstalled and the backed up user state restored

Automating the use of Migrate7 helps ensure an efficient and repeatable process that allows IT administrators to be more productive.

In a typical networked company environment, it's most efficient to deploy Migrate7 on a shared server that hosts the application files and typically also the user state data extracted from the user systems (although this information can also be stored elsewhere). This approach is useful as Migrate7 then doesn't have to be installed on each individual system where it will be used; the application can be run directly from the server.

Configuration settings and the information needed by Migrate7 is also stored centrally on this shared server.

In a highly distributed environment, it's of course possible to have multiple shared installations of Migrate7 (e.g. one per branch office). Your network configuration will help determine what the best approach is for your environment.

In most cases, one or more scripts are created for each operation so that you don't have to remember all of the command-line parameters every time you perform an operation with Migrate7. These scripts can be simple batch files, PowerShell scripts or anything else that can run an application and pass command-line parameters to the application.

These scripts are also useful for integration into OS deployment solutions or desktop management tools such as Microsoft's System Center, FrontRange's Client Lifecycle Management or Materna's DX-Union.



Automating Personality Migrations

Using command-line parameters, Migrate7 can be set up to automatically extract, inject and backup the user state for the currently logged in user, a user that is not logged in to the computer, or multiple users.

The personality is extracted or backed up on the source PC and automatically injected on the target PC. The next section details all supported command line switches followed by batch file examples that will assist you in the development of an automated migration process.

Note

To extract, inject or backup a personality for a user or users that are not currently logged in to the machine, the user that is performing the extraction or injection must have Local Administrator Rights. Migrate7 also requires UAC elevation on Windows Vista and Windows 7.



3. Installer Command-Line Parameters

Introduction

If you need to deploy Migrate7 to more than one system, it can be useful to automate the installer to reduce the amount of work required (or to be able to deploy Migrate7 using some form of application deployment tool). This chapter describes the available options for the Migrate7 installer.

When using `msiexec.exe` to perform an automated installation, it's highly recommended that you use `start /w` to run the installation since it ensures Windows will wait for the installation to complete before executing the next command.

Switches

COMPANY_NAME

Functionality This switch allows you to define the name of the company your copy of Migrate7 is licensed to instead of having to entering this information in the installer.

Applicability This switch applies only to the main installer (Migrate7.msi).

Example `Start /w msiexec /i Migrate7.msi COMPANY_NAME=Contoso`

DESKTOPSHORTCUT

Functionality This switch allows you to skip creating the desktop shortcut for Migrate7. The default value of this property is 1 which causes the desktop shortcut to be created, set the property to 0 to prevent the desktop shortcut from being created.

Applicability This switch applies to both the main installer (Migrate7.msi) and the optional client installer (ClientInstall.msi).

Example `Start /w msiexec /i Migrate7.msi DESKTOPSHORTCUT=0`

PIDKEY

Functionality This switch allows you to define the product key for your copy of Migrate7 instead of having to entering this information in the installer.

Applicability This switch applies only to the main installer (Migrate7.msi).

Example `Start /w msiexec /i Migrate7.msi PIDKEY=123456`



QUIET

Functionality This command performs a Migrate7 Client install in silent mode. Note that all the default installation options are chosen in this mode. The software will be installed to C:\Migrate7 Installation. A program group named 'Tranxition' will be created as well as a Migrate7 shortcut on the desktop.

Applicability This switch applies to both the main installer (Migrate7.msi) and the optional client installer (ClientInstall.msi).

Example Start /w msixexec /i Migrate7.msi /quiet

SHAREPOINT_INSTALL_DIR

Functionality Migrate7 Client defaults to install to the following directory: C:\Migrate7 Installation. Using the command switch **SHAREPOINT_INSTALL_DIR=<path>** in a batch file enables you to specify the path where the Migrate7 Client will be installed.

Applicability This switch applies only to the main installer (Migrate7.msi).

Example Start /w msixexec /i Migrate7.msi
SHAREPOINT_INSTALL_DIR=C:\Migrate7

UNINSTALL

Functionality This command uninstalls Migrate7 from the client computer. All client files will be removed from the PC as well as the program group entry and the desktop shortcut.

Applicability This switch applies to both the main installer (Migrate7.msi) and the optional client installer (ClientInstall.msi).

Example Start /w msixexec /uninstall Migrate7.msi /quiet

USER_NAME

Functionality This switch allows you to define the name of the user your copy of Migrate7 is licensed to instead of having to entering this information in the installer.

Applicability This switch applies only to the main installer (Migrate7.msi).

Example Start /w msixexec /i Migrate7.msi USER_NAME="Harvey Dowd"



Complete Examples

Automated Installation

The command below performs the following actions:

- Prevents the desktop shortcut from being created
- Sets the name of the licensed user to Harvey Dowd
- Sets the name of the licensed company to Contoso
- Sets the license key to 12345
- Installs Migrate7 to the directory C:\M7
- Performs an unattended installation with no user interaction required

```
Start /w msixexec /i Migrate7.msi DESKTOPSHORTCUT=0 USER_NAME="Harvey Dowd"  
COMPANY_NAME=Contoso PIDKEY=12345 SHAREPOINT_INSTALL_DIR=C:\M7 /quiet
```

Automated Uninstallation

The command below performs a silent uninstallation of Migrate7:

```
Start /w msixexec /uninstall Migrate7.msi /quiet
```



4. Application Command-Line Parameters

Introduction

This chapter describes the command-line parameters supported by Migrate7. Using these command-line parameters it's possible to fully automate Migrate7. Do note, however, that an administrator will need to run Migrate7 at least once in order to define the configuration that should be used by Migrate7.

You need at least one configuration file, but it's also possible to have multiple configuration files to accommodate different needs for different sets of users, see the CONFIG parameter for information on how to define which configuration file to use for an operation.

When running Migrate7 from the command-line, it's highly recommended that you use `start /w` to run the application since it ensures Windows will wait for Migrate7 to complete the operation before executing the next command.

Basic Command Line Parameters

The basic command-line parameters are used to control basic Migrate7 operations and include:

- AutoBackup – perform user state backup
- AutoExtract – extract user state
- AutoInject – inject user state
- Config – specify the configuration file to use for an operation
- Datastore – specify where user state data is located
- Excludedisks – exclude disks when injecting data
- Http – use a WebDAV data store instead of a file share data store
- Password – specify a password for an operation
- Source – specify the name of the computer the data was extracted from



AUTOBACKUP

Syntax /AUTOBACKUP

Extraction use Backs up changes made to user state after an initial extraction has been performed for the user in question (note that a full extraction must be performed for a user before a backup can be performed).

If the personality to backup isn't specified on the command-line, Migrate7 scans the user state data store location for an existing extraction for a computer with the same name where the backup is taking place.

If no matching user state can be found or if more than one match is found, Migrate7 exits with an appropriate exit code.

Note that you can only perform a backup on the same system where the original extraction took place.

Injection use N/A.

Must be used with

Cannot be used with AUTOEXTRACT, AUTOINJECT.

Example START /w se.exe /autobackup



AUTOEXTRACT

Syntax /AUTOEXTRACT

Extraction use The /AUTOEXTRACT command, if used without another supported extraction command switch will automatically perform a personality extraction of the user that is currently logged on to the computer.

Note that the default Migrate7 configuration will be used if a configuration file is not specified in the command line (using the CONFIG command).

Administrators will have to configure Migrate7 with the desired settings.

Injection use N/A.

Must be used with Can be used by itself, but typically at least the CONFIG switch is used as well.

Cannot be used with AUTOINJECT, AUTOBACKUP, SOURCE.

Example START /w se.exe /autoextract



AUTOINJECT

Syntax /AUTOINJECT

Extraction use N/A.

Injection use If this command is used without another supported injection command, the switch will automatically perform a personality injection for the user that is currently logged on to the computer.

Migrate7 searches the default data store for personalities with a user name that matches the user name of the currently logged on user. If only one matching personality containing that username is found the personality for that user is injected.

If more than one matching personality is found, or no matching personalities are found, Migrate7 will terminate and return an exit code.

Must be used with Can be used by itself, but typically at least the CONFIG and SOURCE switches are used as well.

Cannot be used with AUTOBACKUP, AUTOEXTRACT.

Example START /w se.exe /autoextract



CONFIG

Syntax

`/CONFIG <fully qualified path to configuration file>`

Extraction use

Specifies the configuration file to use when performing an automatic extraction or injection.

If the specified path to the configuration file is invalid Migrate7 will terminate and return an exit code.

Injection use

Loading a configuration file during injection does NOT specify what content or specific application/windows settings are to be injected. All items that are extracted and present in the personality will be injected.

Must be used with

Can be used by itself, but typically used with AUTOBACKUP, AUTOEXTRACT or AUTOINJECT.

Cannot be used with

Example

```
START /w se.exe /autoextract /config  
"\\myserver\migrate7\configuration.xml"
```



DATASTORE

Syntax

`/DATASTORE <fully qualified path to data store>`

Extraction use

Specifies the location of where user state data from the extraction should be stored. This command overrides the data store information in the configuration file.

If the directory specified in the path doesn't exist it will be created. If the creation fails, Migrate7 will terminate and return an appropriate exit code.

Note: By design, Migrate7 does not extract any files from any folder below the specified data store location. Please take this into account if you place the data store on a local drive.

Injection use

Specifies the location where user state data can be found. This command overrides the data store information in the configuration file.

If the directory specified in the path doesn't exist, Migrate7 will terminate with an appropriate exit code.

Must be used with

AUTOBACKUP, AUTOEXTRACT or AUTOINJECT.

Cannot be used with

Example

```
START /w se.exe /autoextract /datastore  
\\myserver\migrate7\datastore
```



EXCLUDEDISKS

Syntax	<code>/EXCLUDEDISKS <drive letter>[;<drive letter>]</code>
Extraction use	N/A.
Injection use	Specifies drive letters that Migrate7 shouldn't inject data to.
Must be used with	AUTOINJECT.
Cannot be used with	AUTOBACKUP, AUTOEXTRACT.
Example	<code>START /w se.exe /autoinject /EXCLUDEDISKS D;E</code>



HTTP

Syntax

```
/HTTP <url> <unique name> [overwrite:<yes|no>]  
[verifycert:<yes|no>]
```

Extraction use

Specifies that the extracted user state data should be stored on a HTTP server using WebDAV.

Every extraction must have a unique name that is used as a prefix for the files stored at the specified URL. If the specified unique name already is used at the specified location, Migrate7 will terminate with an appropriate exit code unless the optional `overwrite:yes` parameter is defined (the default if not specified is `overwrite:no`).

If HTTPS is used and a self-signed or otherwise untrusted SSL certificate is being used, `verifycert:no` must be specified as Migrate7 otherwise will terminate with an appropriate exit code (the default if not specified is `verifycert:yes`).

If port number 443 is specified in the URL, Migrate7 will use HTTPS.

Injection use

Specifies that the extracted user state data should be retrieved from a HTTP server using WebDAV.

Every injection must specify the unique name defined when the user state data was originally extracted. If no data can be found using the specified unique name, Migrate7 will terminate with an appropriate exit code.

If HTTPS is used and a self-signed or otherwise untrusted SSL certificate is being used, `verifycert:no` must be specified as Migrate7 otherwise will terminate with an appropriate exit code (the default if not specified is `verifycert:yes`).

If port number 443 is specified in the URL, Migrate7 will use HTTPS.

Must be used with

AUTOBACKUP, AUTOEXTRACT or AUTOINJECT.

Cannot be used with

Example

```
start /w se.exe /http http://mywebserver:3466/migrate7  
MyUniqueString /AutoExtract /AllUsers  
  
start /w se.exe /http https://mywebserver/Migrate7  
MyUniqueString overwrite:yes verifycert:no /AutoExtract  
/AllUsers
```



PASSWORD

Syntax /PASSWORD <password>

Extraction use Assigns a password to the extracted user state data during extraction. This password must be specified for any subsequent backup or injection.

The specified password must be 7 to 15 characters in length and is case sensitive.

Injection use When used for injection and the password is either missing or incorrect Migrate7 will terminate and return an appropriate exit code.

Injections will only occur if the specified password matches the password defined at the time of the original extraction.

Must be used with AUTOBACKUP, AUTOEXTRACT or AUTOINJECT.

Cannot be used with

Example START /w se.exe /autoextract /PASSWORD password



SOURCE

Syntax /SOURCE <computer name>

Extraction use N/A.

Injection use Specifies the name of the computer associated with the extracted user state data.

This command is typically used in combination with the ALLUSERS command line switch and only on Injection. When used in conjunction with the ALLUSERS switch, all the users associated with the personality that matches the specified computer name following the SOURCE command will automatically inject.

If there are no matching personalities or if there is more than one matching personality then Migrate7 will terminate and return an appropriate exit code.

Note that the computer name is defined as just the unique computer name (i.e. MYCOMPUTER as opposed to a fully qualified DNS name like MYCOMPUTER.MYDOMAIN.LOCAL).

Must be used with AUTOINJECT.

Cannot be used with AUTOBACKUP, AUTOEXTRACT.

Example START /w se.exe /autoinject /SOURCE MYCOMPUTER /ALLUSERS



MAPPINGFILE

Syntax /MAPPINGFILE <mapping file path>

Extraction use N/A.

Injection use Specifies the path of a mapping file that defines the mappings between source and target computers to enable fully automatic, zero-touch, migrations.

This command is typically used in combination with the ALLUSERS command line switch and only on Injection. When used in conjunction with the ALLUSERS switch, all the users associated with the personality that matches the source computer defined in the mapping file will automatically inject.

If there are no matching personalities or if there is more than one matching personality then Migrate7 will terminate and return an appropriate exit code.

Must be used with AUTOINJECT.

Cannot be used with AUTOBACKUP, AUTOEXTRACT, SOURCE.

Example START /w se.exe /autoinject /mappingfile mappings.m7map
/ALLUSERS

Note

See Injection Mapping Files on page 53 for more information on how to create Mapping Files.



User-Related Command Line Parameters

The user-related command-line parameters are used to define which users to include or exclude for an operation:

- AllUsers – include all users in the operation
- Domain – map users from one domain to another
- ExcludeDomain – exclude all users from a domain
- ExcludeLocal – exclude all local users
- ExcludeUser – exclude a specific user
- IncludeUser – include a specific user
- InjectToLoggedInUser – inject user state to the currently logged on user



ALLUSERS

Syntax /ALLUSERS

Extraction use Extracts all existing user profiles on the computer.

It is strongly recommended that you exclude the local administrator account when using this command to avoid accidentally injecting that account on the target system.

Injection use Injects all users in a specified personality. The personality can be specified using the SOURCE command.

Must be used with AUTOEXTRACT or AUTOINJECT.

Cannot be used with AUTOBACKUP.

Example

```
START /w se.exe /autoextract /ALLUSERS /EXCLUDEUSER  
%COMPUTERNAME%\Administrator  
  
START /w se.exe /autoinject /SOURCE MYCOMPUTER /ALLUSERS
```



DOMAIN

Syntax	<code>/DOMAIN <source domain name>:<target domain name> [<source domain name>:<target domain name>]</code>
Extraction use	N/A.
Injection use	Redirects users from a source domain to a different target domain. This command is typically used in conjunction with the ALLUSERS when users are being moved from one domain to another. Note: Domain names containing spaces must be enclosed in quotes.
Must be used with	AUTOINJECT.
Cannot be used with	AUTOBACKUP, AUTOEXTRACT, INCLUDEUSER.
Example	<code>START /w se.exe /autoinject /SOURCE MYCOMPUTER /ALLUSERS /DOMAIN "MYDOMAIN:SOME DOMAIN"</code>

Note

Migrate7 does not create domain user accounts. When migrating users between domains using the /DOMAIN command the user's account must already exist in the target domain otherwise the injection will fail.



EXCLUDEDOMAIN

Syntax	/EXCLUDEDOMAIN <domain name>
Extraction use	Prevents user profiles from the specified domain from being extracted.
Injection use	Prevents user state data belonging to users from the specified domain from being injected.
Must be used with	AUTOEXTRACT, AUTOINJECT.
Cannot be used with	AUTOBACKUP.
Example	<pre>START /w se.exe /autoextract /allusers /EXCLUDEDOMAIN MYDOMAIN START /w se.exe /autoinject /source MYCOMPUTER /allusers /EXCLUDEDOMAIN MYDOMAIN</pre>



EXCLUDELOCAL

Syntax /EXCLUDELOCAL

Extraction use Excludes all local users from being extracted.

This command is most commonly used in conjunction with the /ALLUSERS command.

If by using this switch it results in no personalities being extracted, Migrate7 will terminate and return an exit code.

Injection use Excludes local users from being injected.

This command is most commonly used in conjunction with the /ALLUSERS command.

If by using this switch it results in no personalities being injected, Migrate7 will terminate and return an exit code.

Must be used with AUTOEXTRACT, AUTOINJECT.

Cannot be used with AUTOBACKUP.

Example
START /w se.exe /autoextract /ALLUSERS /EXCLUDELOCAL
START /w se.exe /autoinject /SOURCE MYCOMPUTER /ALLUSERS /EXCLUDELOCAL



EXCLUDEUSER

Syntax	<code>/EXCLUDEUSER <domain name\user name> [<domain name>\<user name>]</code>
Extraction use	<p>Allows you to exclude specified users from being extracted.</p> <p>This command is most commonly used in conjunction with the ALLUSERS command.</p> <p>If by using this switch it results in no personalities being extracted, Migrate7 will terminate and return an exit code.</p>
Injection use	<p>Allows you to exclude specified users from being injected.</p> <p>This command is most commonly used in conjunction with the ALLUSERS command.</p> <p>If by using this switch it results in no personalities being injected, Migrate7 will terminate and return an exit code.</p>
Must be used with	AUTOEXTRACT, AUTOINJECT.
Cannot be used with	AUTOBACKUP.
Example	<pre>START /w se.exe /autoextract /ALLUSERS /EXCLUDEUSER MYDOMAIN\User1 START /w se.exe /autoinject /Source MYCOMPUTER /ALLUSERS /EXCLUDEUSER MYDOMAIN\User1</pre>



INCLUDEUSER

Syntax

```
/INCLUDEUSER <domain name>\<user name> [<domain name>\<user name>]
```

```
/INCLUDEUSER <domain name>\<user name>[:<target domain name>\<target user name>] [<domain name>\<user name>[:<target domain name>\<target user name>]]
```

Extraction use

The /INCLUDEUSER command extracts the personalities for each user that is specified following the command.

In domain environments, user names must be specified with the domain name in the form <DOMAIN>\<USER>.

If there are no usernames that match the users specified in the command line then Migrate7 will terminate and return the appropriate exit code.

If at least one user specified matches a username on the computer where the extraction operation is being performed, but one or more other specified users don't match any usernames on the computer, the extraction process will continue and extract the user state for the users that matched and the operation log that gets created following the operation displays the users that were not extracted.

Note: Usernames and Domain names with spaces must be contained in quotes when specified following the /INCLUDEUSER command.

Injection use

This parameter is used to specify which users should be injected.

In domain environments, user names must be specified with the domain name in the form <DOMAIN>\<USER>.

It's also possible to remap users using this command. The most common case for this is when users are being moved from one domain to another. To do this, specify the user names as <SOURCE DOMAIN>\<SOURCE USER>:<TARGET DOMAIN>\<TARGET USER>.

Migrate7 will only inject the matching users if all specified users exist within a single personality.

Using the SOURCE command allows you to further limit the scope of possible personalities when comparing usernames.

If all users specified with INCLUDEUSER exists in more than one personality, Migrate7 will terminate and return the appropriate exit code.

Note: Usernames and Domain names with spaces must be contained in quotes when specified following the INCLUDEUSER command.

Must be used with

AUTOEXTRACT, AUTOINJECT.



Cannot be used with AUTOBACKUP.

Example

```
START /w se.exe /autoextract /INCLUDEUSER MYDOMAIN\User1
MYDOMAIN\User2

START /w se.exe /autoextract /INCLUDEUSER "SOME DOMAIN\User A"
"SOME DOMAIN\User B"

START /w se.exe /autoinject /SOURCE MYCOMPUTER /INCLUDEUSER
MYDOMAIN\User1 MYDOMAIN\User2

START /w se.exe /autoinject /SOURCE computername /INCLUDEUSER
"MYDOMAIN\User1:SOME DOMAIN\User A" "MYDOMAIN\User2:SOME
DOMAIN\User B"
```

Note

Migrate7 does not create domain user accounts. When migrating a user between domains using the /INCLUDEUSER command the user's account must already exist in the target domain otherwise the injection will fail.



INJECTTOLOGGEDINUSER

Syntax /INJECTTOLOGGEDINUSER

Extraction use N/A.

Injection use Forces data to be injected to the user that's interactively logged on to the computer regardless of which user the data was extracted for.

Note: There are very few scenarios where this command is required, in most scenarios the INCLUDEUSER command will work better and also doesn't require that a user is interactively logged on to the computer.

Note: There must be only a single user in the user state data being injected.

Must be used with AUTOEXTRACT, AUTOINJECT.

Cannot be used with AUTOBACKUP.

Example START /w se.exe /autoinject /source MYCOMPUTER
/INJECTTOLOGGEDINUSER



Advanced Command Line Parameters

The advanced command-line parameters control behavior that aren't always used in the most common use cases but handle scenarios that come up from time to time:

- DisplayErrorCode – display any errors at the end of the operation
- HideStatus – don't display the progress dialog during the operation
- Import – import file and/or registry rules before an extraction
- NoCancel – don't display the cancel button in the progress dialog



DISPLAYERRORCODE

Syntax /DISPLAYERRORCODE

Extraction use Causes a dialog describing any errors encountered during the extraction after the extraction completes.

If the extraction completes without errors, no dialog is displayed.

Note: This command should only be used if Migrate7 will be run when a user is interactively logged on to the computer. For fully automated scenarios, it's preferable to check the exit code from Migrate7 and if an error is indicated check the generated log file instead.

Injection use Causes a dialog describing any errors encountered during the injection after the injection completes.

If the injection completes without errors, no dialog is displayed.

Note: This command should only be used if Migrate7 will be run when a user is interactively logged on to the computer. For fully automated scenarios, it's preferable to check the exit code from Migrate7 and if an error is indicated check the generated log file instead.

Must be used with AUTOBACKUP, AUTOEXTRACT or AUTOINJECT.

Cannot be used with

Example START /w se.exe /autoextract /allusers /DISPLAYERRORCODE



HIDESTATUS

Syntax /HIDESTATUS

Extraction use Hides the progress dialog during an extraction.
See also the related NOCANCEL command.

Injection use Hides the progress dialog during an injection.
See also the related NOCANCEL command.

Must be used with AUTOBACKUP, AUTOEXTRACT or AUTOINJECT.

Cannot be used with

Example `START /w se.exe /autoextract /allusers /HIDESTATUS`



IMPORT

Syntax

`/IMPORT <fully qualified path to rule file>`

Extraction use

This command imports a predefined list of file and/or registry rules via the AUTOEXTRACT command line.

The XML file that contains the rules uses the same format as the rules that are created and exported using the Migrate7 rule export command.

Injection use

N/A.

Must be used with

AUTOEXTRACT.

Cannot be used with

AUTOBACKUP, AUTOINJECT.

Example

```
START /w se.exe /autoextract /import  
\\myserver\migrate7\rules.xml
```



NOCANCEL

Syntax /NOCANCEL

Extraction use Hides the Cancel button in the progress dialog during an extraction.
See also the related HIDESTATUS command.

Injection use Hides the Cancel button in the progress dialog during an injection.
See also the related HIDESTATUS command.

Must be used with AUTOBACKUP, AUTOEXTRACT.

Cannot be used with AUTOINJECT.

Example START /w se.exe /autoextract /allusers /NOCANCEL



5. HTTP Command Line Usage

Introduction

By default, Migrate7 stores and retrieves user state data from a file share on the network. It's also possible to specify that a WebDAV server should be used instead, making it possible to use HTTP or HTTPS to access the user state data.

The command-line parameter used to define the use of HTTP(S) is HTTP, described on page 19.

The most important difference between a file-based data store and the WebDAV-based data store is that a unique name must be defined for each operation. This unique name is used to distinguish the files associated with the extracted user state data.

Command Line Definitions

URL

The URL that defines where the user state data files should be stored or read from. Examples:

`http://myserver/mydirectory`

`https://secureserver/personalities`

`http://server:8080/personalitystore`

Note

If the port number specified in the URL is 443, Migrate7 uses HTTPS regardless of whether the URL starts with `http://` or `https://`.

UniqueString

This represents the unique name of the personality being extracted or injected.

Note

The specified Unique String cannot contain any spaces, quotes or dashes.

Overwrite

This command line switch is optional and is used in conjunction with AUTOEXTRACT. Use `overwrite:yes` to overwrite an existing personality with the same UniqueString. Use `overwrite:no` to prevent overwriting an existing set of user state data. If `overwrite:` is not used the default behavior is not to overwrite existing data.



Verifycert

This command line switch is optional and is used to control whether SSL certificates should be verified or not. If you are using a self-signed certificate for your web server, using `verifycert:no` is typically needed (`verifycert:yes` is the default).

Example Command Line using /HTTP

Extraction

```
start /w se.exe /http http://ServerName:3466/upload UniqueString /AutoExtract /AllUsers
```

```
start /w se.exe /http https://ServerName/upload UniqueString /AutoExtract /AllUsers
```

```
start /w se.exe /http https://ServerName/upload UniqueString verifycert:no /AutoExtract /AllUsers
```

Injection

```
start /w se.exe /http http://ServerName:3466/upload UniqueString /AutoInject /AllUsers
```



6. Automation Examples

With a good understanding of how the command-line parameters are used to automate a migration, the next step is to incorporate those command line switches into an automated script.

The following chapters illustrate several automation use case examples:

- Chapter 7 - Processing Logged On Users
- Chapter 8 - Processing Not-Logged On Users
- Chapter 9 - Processing Multiple Users
- Chapter 10 - Moving Users Between Domains
- Chapter 11 - Using Passwords in Migrations

Each example there includes a fully functional extraction and injection batch file along with a table that describes the commands being used to perform the operation.

Note

To save any of the examples as MS-DOS batch files, open **Notepad** and copy then paste the text. Select **Save**, change the 'Save as type' to 'All files' then change 'untitled' to 'Extract.bat' and select **Save**.

Note

The batch file examples in this section do not contain exit codes. The full list of supported exit codes is available in chapter 14 - Migrate7 Exit Codes.

It is recommended that exit codes be included in each batch file that you develop.



7. Processing Logged On Users

Description

Extracting and injecting a currently logged user is a use case that most commonly comes up in smaller environments that don't have any kind of desktop management tool deployed. In this case there may not even be login scripts being used in which case it may be necessary to make the batch files accessible to the users in the form of a desktop shortcut (or a shortcut placed in the Startup folder for regular backups).

Note

If you are performing an extraction or injection of the currently logged in user's personality, the logged in user must have local administrator rights on the computer.

Many applications don't write their settings until the user exits the application (most of the Office applications operate this way for instance). For this reason it's highly recommended that users be instructed to exit all applications before performing a Migrate7 operation.

Process Examples

Migrating the user state for the currently logged on user is a very straightforward process. If you plan on using technicians to upgrade the systems or to deploy a new image to the machine, then the technician can execute the extraction and injection batch files on the user's computer while they are still logged on.

Once the technician begins the extraction or injection process on one machine, they can simply move to the next user's machine and use the same process. Using a manual process the technician can only perform one migration at a time. However, by automating the process they can perform several extractions and injections in the time it would take to perform a single migration manually.

The process can also be configured to have the users initiate the extraction and injection, but this is rarely very practical as local administrator rights are required to perform any operation with Migrate7.

Extract.bat File Example

This Extract.bat file can be used for each of the processes mentioned above to extract the currently logged on user. This example assumes that Migrate7 was installed on the server "servername" and that the installation directory is shared as "Migrate7".

1. @echo off
2. echo Starting extraction...
3. START /w \\servername\migrate7\se.exe /autoextract /config
\\servername\migrate7\configuration.xml
4. IF ERRORLEVEL 1 (echo Extraction failed) ELSE (echo Extraction succeeded)



Extract.bat File Definition (By Line)

Line 1	Turns off the screen messages so the user does not see the commands in the batch file and is optional.
Line 2	Display a progress message so the user knows what's going on.
Line 3	Starts Migrate7 performing an extraction using the specified configuration file and waits for the extraction to complete.
Line 4	Performs a very simple check to see if the extraction succeeded or not (0 means success, anything greater than 0 means an error occurred)

Inject.bat File Example

This Inject.bat file can be used for each of the processes mentioned above to inject to the currently logged on user. This example assumes that Migrate7 was installed on the server "servername" and that the installation directory is shared as "Migrate7".

1. @echo off
2. echo ...Injecting Personality
3. START /w \\servername\migrate7\se.exe /autoinject /config \\servername\migrate7\configuration.xml
4. IF ERRORLEVEL 1 (echo Extraction failed) ELSE (echo Extraction succeeded)

Inject.bat File Definition (By Line)

Line 1	Turns off the screen messages so the user does not see the commands in the batch file and is optional.
Line 2	Display a progress message so the user knows what's going on.
Line 3	Starts Migrate7 performing an injection using the specified configuration file and waits for the injection to complete.
Line 4	Performs a very simple check to see if the injection succeeded or not (0 means success, anything greater than 0 means an error occurred)



8. Processing Not-Logged On Users

Description

The most common use case for Migrate7 is to run it when there's no user logged on to the system. This not only ensures that the operation can be performed remotely, but also offers the best fidelity since no applications will be running and thus all application settings will have been stored properly before the operation starts.

Process Examples

Using environment variables and command line switches a technician can log in to a given workstation and perform an automated extraction and injection of a specified user. The technician simply uses a parameter in the batch file that defines the user to process.

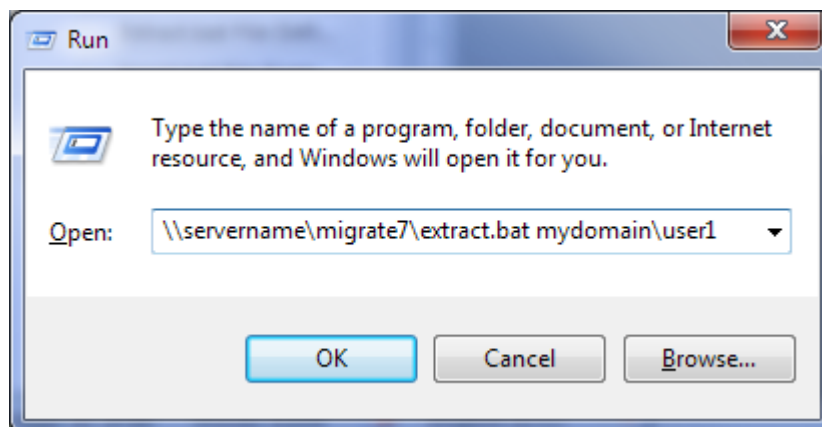
The username is specified when the batch file is invoked. The advantage of using this process is the user does not have to be present during the extraction or the injection, and the technician performing the migration does not have to obtain the username and password of the user that will be migrated.

Note

To extract or inject a personality for a user or users that are not currently logged in to the machine, the user that is performing the extraction or injection must have Local Administrator Rights. Migrate7 also requires UAC elevation on Windows Vista and Windows 7.

Extraction Example (Invoking the Extract.bat file)

In this example, the Extract.bat file is located on the file share \\servername\migrate7. The technician can invoke the Extract.bat file from the windows Start | Run command field by entering the path to where the Extract.bat file resides. The user that needs to be extracted is specified after the batch file.





Extract.bat File when user is not logged in

This example assumes that Migrate7 was installed on the server “servername” and that the installation directory is shared as “Migrate7”. In order to extract the correct user, the /INCLUDEUSER parameter is used.

To build this script, simply take the script from page 40, and replace line 3 with the following:

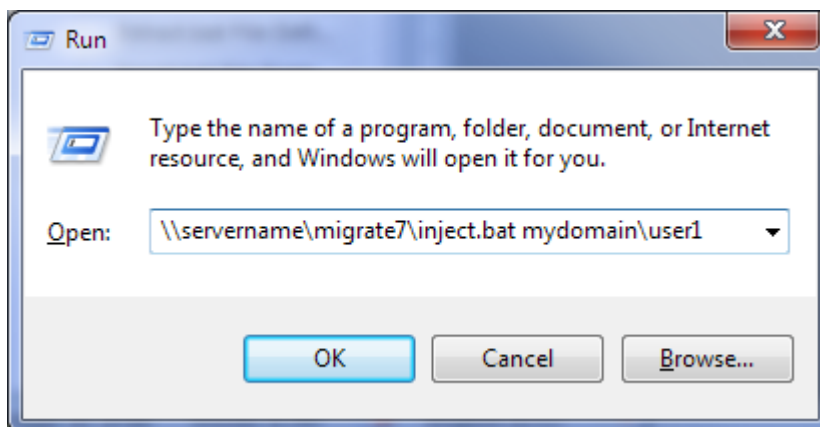
3. `START /w \\servername\migrate7\se.exe /autoextract /IncludeUser %1 /config \\servername\migrate7\configuration.xml`

Extract.bat File when user is not logged in

Line 3 | The command has been modified to specify the name of the user that should be extracted using the /INCLUDEUSER parameter. The actual user name must be specified when the batch file is executed.

Injection Example (Invoking the Inject.bat file)

In this example, the inject.bat file is located on the file share \\servername\migrate7. The technician can invoke the Inject.bat file from the windows Start | Run command field by entering the path to where the inject.bat file resides. The username of the user you want to inject is specified after the batch file.



Inject.bat File Example when user is not logged in

This example assumes that Migrate7 was installed on the server “servername” and that the installation directory is shared as “Migrate7”. In order to extract the correct user, the /INCLUDEUSER parameter is used.

To build this script, simply take the script from page 41, and replace line 3 with the following:

3. `START /w \\servername\migrate7\se.exe /autoinject /IncludeUser %1 /config \\servername\migrate7\configuration.xml`



Inject.bat File Definition (By Line)

Line 3

Performs the automatic injection of the user's personality that was specified when the batch file was invoked. Following the /IncludeUser switch is a %1. This is the batch file parameter that represents the username specified following the Inject.bat file called from the Start | Run field. It is, again, important to add the /w parameter to the start command.



9. Processing Multiple Users

Description

Migrate7 can be used to process the user state for multiple users on a computer. This is useful when migrating a computer that is shared by several users.

In most cases many of the settings and files associated with a user are specific for that particular user. Migrate7 fully supports this use case.

Process Examples

Using environment variables and command line switches a technician can log in to a given workstation and perform an automated extraction and injection of all the users that exist on the computer. For extraction, the technician can use the ALLUSERS parameter to extract all of the users on the computer.

On injection the batch file will combine the ALLUSERS switch and the SOURCE switch to specify and inject the extracted user state data. The SOURCE parameter will be followed by a batch file parameter that will represent the name of the computer where the extraction was performed.

The computer name is specified when the batch file is invoked. The advantage of using this process is the user does not have to be present during the extraction or the injection, and the technician performing the migration does not have to obtain the username and password for any of the users that have profiles on the computer.

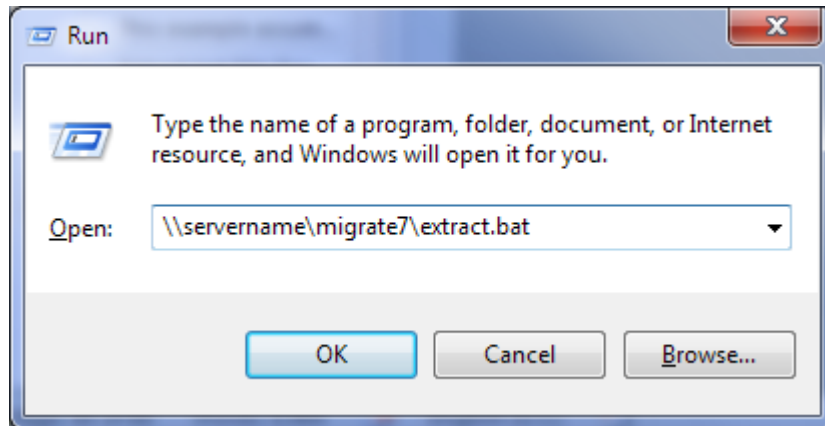
Note

To extract or inject a personality containing multiple users, the user that is performing the extraction or injection must have Local Administrator Rights. Migrate7 also requires UAC elevation on Windows Vista and Windows 7.



Extraction Example (Invoking the Extract.bat file)

This example assumes that Migrate7 was installed on the server “servername” and that the installation directory is shared as “Migrate7”. The technician can invoke the Extract.bat file from the windows Start | Run command field by entering the path to where the Extract.bat file resides, or by simply double clicking on the Extract.bat file.



Extract.bat File Example to Extract Multiple Users

This example Extract.bat file performs an automated extraction for all users on the computer.

To build this script, simply take the script from page 40, and replace line 3 with the following:

```
3.    START /w \\servername\migrate7\se.exe /autoextract /AllUsers /config  
      \\servername\migrate7\configuration.xml
```

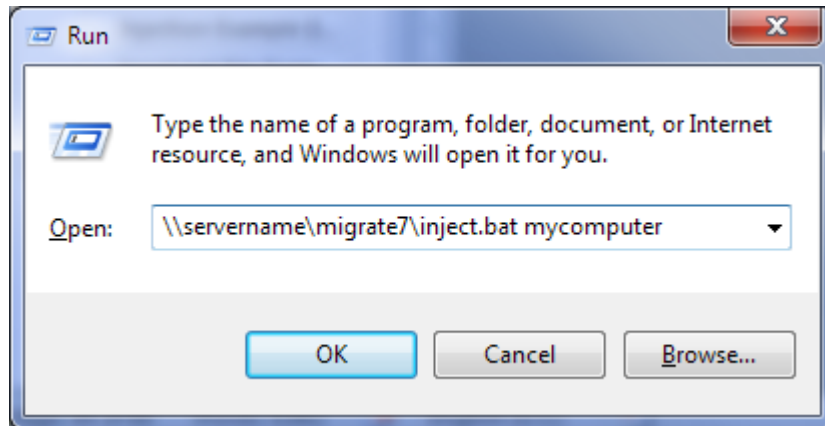
Extract.bat File Definition (By Line)

Line 3 | Performs an extraction of all users on the computer where the script is run.



Injection Example (Invoking the Inject.bat file) to Inject Multiple Users

In this example, the inject.bat file is located on the file share \\servername\migrate7. The technician can invoke the Inject.bat file from the windows Start | Run command field by entering the path to where the Inject.bat file resides. The name of the computer where the extraction was performed is specified after the batch file.



Inject.bat File Example to Inject Multiple Users

This example assumes that Migrate7 was installed on the server "servername" and that the installation directory is shared as "Migrate7". This example Inject.bat file performs an automated injection of all the users extracted from the specified computer.

To build this script, simply take the script from page 41, and replace line 3 with the following:

3. START /w \\servername\migrate7\se.exe /autoinject /Source %1 /AllUsers /config
 \\servername\migrate7\configuration.xml
- Line 3 | Injects all of the users extracted from the specified computer



10. Moving Users Between Domains

Description

The DOMAIN command allows you to take user state data extracted for a user in one domain and redirect that to a user with the same user name in a different domain. This is useful when users are being moved between domains as part of a migration.

Note

Migrate7 does not create domain user accounts. When migrating a user between domains the user's account must already exist in the target domain otherwise the injection will fail.

Process Examples

Using environment variables and command line switches a technician can log in to a given workstation and perform an automated extraction and injection of all the users that exist on the computer. For extraction, the technician can use the ALLUSERS command line switch to extract all of the users on the computer. On injection the batch file will combine the ALLUSERS switch and the SOURCE switch to specify the name of the computer the user state data was extracted from.

The Computer Name is specified when the batch file is invoked. In addition, the DOMAIN switch will be used to redirect the users in the specified personality to be created with association to the specified target domain.

The advantage of using this process is the user does not have to be present during the extraction or the injection, and the technician performing the migration does not have to obtain the user name and password for any of the users that have profiles on the computer.

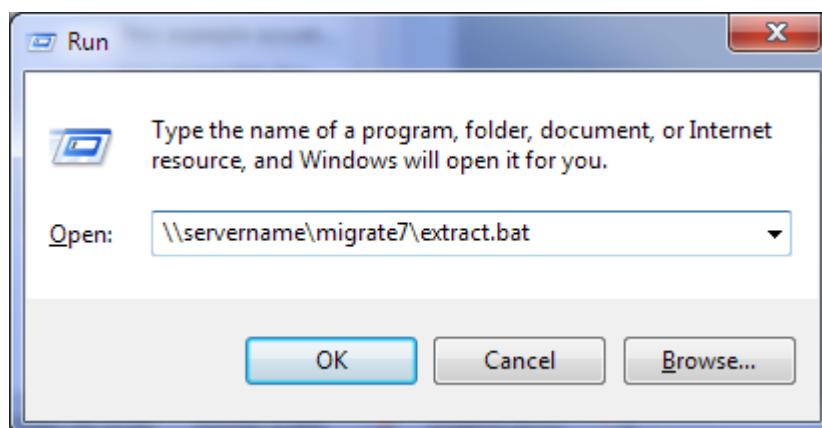
Note

To extract or inject a personality containing multiple users, the user that is performing the extraction or injection must have Local Administrator Rights. Migrate7 also requires UAC elevation on Windows Vista and Windows 7.



Extraction Example (Invoking the Extract.bat file)

This example assumes that Migrate7 was installed on the server “servername” and that the installation directory is shared as “Migrate7”. The technician can invoke the Extract.bat file from the windows Start | Run command field by entering the path to where the Extract.bat file resides, or by simply double clicking on the Extract.bat file.



Extract.bat File Example for Moving Users between Domains

This example Extract.bat file performs an automated extraction for all users on the computer.

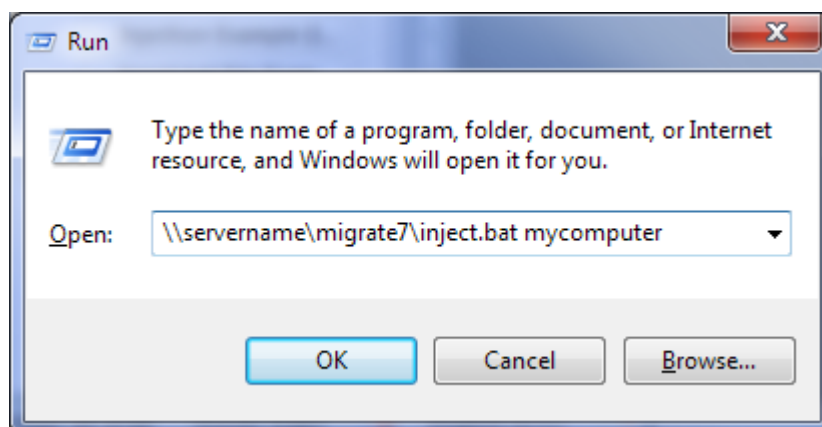
To build this script, simply take the script from page 40, and replace line 3 with the following:

```
3.    START /w \\servername\migrate7\se.exe /autoextract /AllUsers /config  
      \\servername\migrate7\configuration.xml
```

Line 3 | Performs an extraction for all users on the computer.

Injection Example (Invoking the Inject.bat file)

In this example, the inject.bat file is located on the file share \\servername\migrate7. The technician can invoke the Inject.bat file from the windows Start | Run command field by entering the path to where the Inject.bat file resides. The name of the computer where the extraction was performed is specified after the batch file.





Inject.bat File Example for Moving Users between Domains

This example assumes that Migrate7 was installed on the server “servername” and that the installation directory is shared as “Migrate7”. This example Inject.bat file performs an automated injection of all the users extracted from the specified computer.

To build this script, simply take the script from page 41, and replace line 3 with the following:

```
3.      START /w \\servername\migrate7\se.exe /autoinject /Source %1 /AllUsers /Domain  
        OldDomain:NewDomain /config \\servername\migrate7\configuration.xml
```

Line 3 | Injects the users extracted from the specified computer, mapping any user from the domain “OldDomain” to the domain “NewDomain”

11. Using Passwords in Migrations

Description

The PASSWORD parameter allows you to assign a password when extracting user state data. This password then needs to be provided for any future operations with the extracted data.

The password can both be entered and saved in the extraction and injection batch files you use, or for more security the password can be specified when either batch files are invoked with the use of simple batch file parameters.

Process Examples

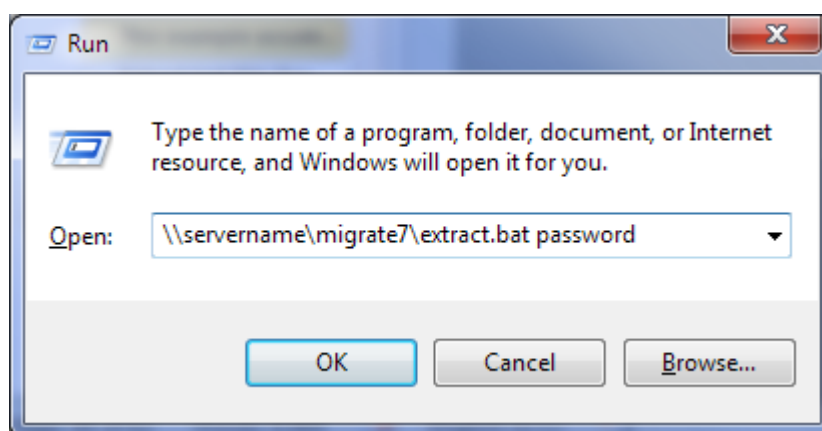
Using batch file parameters and command line switches a technician can specify a password to be assigned when extracting the personality and then called when injecting the password protected personality. In these examples, the password is provided as a parameter to the batch files.

Note

To extract or inject a personality containing multiple users, the user that is performing the extraction or injection must have Local Administrator Rights. Migrate7 also requires UAC elevation on Windows Vista and Windows 7.

Extraction Example (Invoking the Extract.bat file)

This example assumes that Migrate7 was installed on the server “servername” and that the installation directory is shared as “Migrate7”. The technician can invoke the Extract.bat file from the windows Start | Run command field by entering the path to where the Extract.bat file resides, specifying the password that should be used as a parameter to the batch file.





Extract.bat File Example USING A PASSWORD

This example Extract.bat file performs an automated extraction for all users on the computer, assigning a password through a batch file parameter.

To build this script, simply take the script from page 40, and replace line 3 with the following:

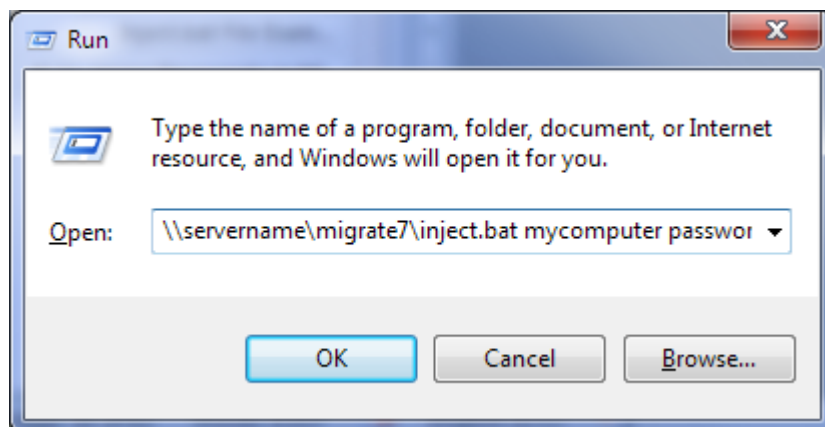
```
3.    START /w \\servername\migrate7\se.exe /autoextract /AllUsers /PASSWORD %1  
      /config \\servername\migrate7\configuration.xml
```

Line 3

Performs an extraction of all users from the computer, assigning the specified password to the extracted user state data.

Injection Example (Invoking the Inject.bat file) Using a Password

In this example, the inject.bat file is located on the file share \\servername\migrate7. The technician can invoke the Inject.bat file from the windows Start | Run command field by entering the path to where the Inject.bat file resides. The name of the computer where the extraction was performed is specified after the batch file as is the password specified when the extraction was performed (please note that the password is cut off in the screenshot below).



Inject.bat File Example Using a Password

This example assumes that Migrate7 was installed on the server "servername" and that the installation directory is shared as "Migrate7". This example Inject.bat file performs an automated injection of all the users extracted from the specified computer and using the provided password to get access to the user state data.

To build this script, simply take the script from page 41, and replace line 3 with the following:

```
3.    START /w \\servername\migrate7\se.exe /autoinject /Source %1 /AllUsers  
      /PASSWORD %2 /config \\servername\migrate7\configuration.xml
```

Line 15

Injects the user state extracted from the specified computer using the provided password.

12. Injection Mapping Files

Description

Injection Mapping files are used to define which source computer contains the user state for a given target computer so that the injection can be fully automated without any administrator intervention required.

Mapping File Structure

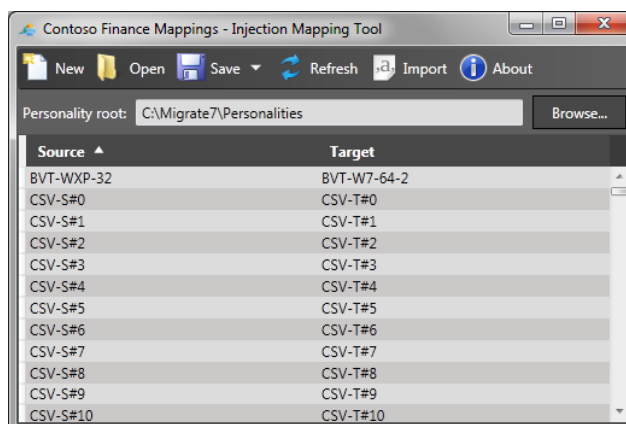
Mapping files are XML files with this structure:

```
<?xml version="1.0" encoding="utf-8"?>
<MappingFile xmlns:i="http://www.w3.org/2001/XMLSchema-instance"
xmlns="http://tranxition.com/schemas/mappingfile/2011/5">
  <Mappings>
    <ComputerMapping>
      <SourceComputer>BVT-WXP-32</SourceComputer>
      <TargetComputer>BVT-W7-64</TargetComputer>
    </ComputerMapping>
  </Mappings>
  <PersonalityRoot>C:\Migrate7\Personalities</PersonalityRoot>
</MappingFile>
```

Each source/target computer pairing is defined in a `<ComputerMapping>` element with each source and target computer only occurring once in the file.

Creating Mapping Files Using the Injection Mapping Tool

Mapping files can be created with any tool that can create XML files, but the easiest way to create them is to use the Injection Mapping Tool that is provided with Migrate7:





Creating a New Mapping File

To create a new Mapping File, follow these steps:

1. Start the Injection Mapping Tool
2. Click the Browse button to display the folder browser
3. Select the location where the personalities are located and click the OK button
4. The tool now reads all of the available personalities and populates the Source column with the names of the computers user state have been extracted from
5. Enter the corresponding target computer names in the Target column
6. Click the Save button to save the Mapping File

Note

The mapping file should contain just the base name of the computer, *not* the fully qualified DNS name.

Adding Source Computers to a Mapping File

Once a Mapping File has been created, additional source computers from subsequent extractions can be added to the file using these steps:

1. Start the Injection Mapping Tool
2. Click the Open button to display the Open Mapping File dialog and open the mapping file in question
3. Click the Refresh button to add all new source computers (i.e. source computers that aren't already in the Mapping File) to the file.
4. Enter the target computer names for the new source computers
5. Click the Save button to save the Mapping File

Importing Source and Target Computers

If you already have the source and target computer information available from another source and can make that available as a CSV file, that file can be imported into the Mapping Tool.

The CSV file must have the following format:

```
<source computer>,<target computer>
```

With a single source/target computer pair on each line in the file.

A CSV file can be imported to create a new mapping file or imported into an existing mapping file using these steps:

1. Start the Injection Mapping Tool
2. If you want to import into an existing Mapping File, open the file
3. Click the Import button display the Import CSV File dialog
4. Select the CSV file to import and click the Open button to add all source systems from the CSV file that aren't already in the Mapping File
5. Click the Save button to save the Mapping File



13. Response files

Description

Since there are limits to command line length in some environments and since the potential exists for complex command lines to exceed those limits, Migrate7 supports command line response files. A response file contains command line arguments (switches) that are accessed indirectly.

Command line response file support reflects the long-standing Microsoft response file behavior. An at-sign (@) followed by a file specification will designate a response file to include in the logical command line.

Response File Example

The response file `\\servername\migrate7\response.txt` contains:

```
/IncludeUser user1 /Config \\servername\migrate7\configuration.xml
```

The corresponding logical command line processed by Migrate7 is:

```
Start /w \\servername\migrate7\se.exe /autoextract /IncludeUser user1 /Config  
\\servername\migrate7\configuration.xml
```

Example

This example will extract the personality of the user that is specified in the response file.

1. `@echo off`
2. `echo Extracting data...`
3. `start /w \\servername\migrate7\se.exe /autoextract
@\\servername\migrate7\response.txt`
4. `IF ERRORLEVEL 1 (echo Extraction failed) ELSE (echo Extraction succeeded)`



14. Migrate7 Exit Codes

Exit codes are used during Migrate7 automation to provide the technician performing the automation more information that can assist in resolving issues concerning the installation or operation of Migrate7.

Migrate7 Installation Exit Codes

Exit Code	Description
1601	The Windows Installer service could not be accessed. Contact your support personnel to verify that the Windows Installer service is properly registered.
1602	User canceled installation.
1603	Fatal error during installation.
1604	Installation suspended, incomplete.
1605	This action is only valid for products that are currently installed.
1606	Feature ID not registered.
1607	Component ID not registered.
1610	The configuration data for this product is corrupt. Contact your support personnel.
1611	Component qualifier not present.
1613	This installation package cannot be installed by the Windows Installer service. You must install a Windows service pack that contains a newer version of the Windows Installer service.
1614	Product is uninstalled.
1618	Another installation is already in progress. Complete that installation before proceeding with this install.
1619	This installation package could not be opened. Verify that the package exists and that you can access it, or contact the application vendor to verify that this is a valid Windows Installer package.
1620	This installation package could not be opened. Contact the application vendor to verify that this is a valid Windows Installer package.
1621	There was an error starting the Windows Installer service user interface. Contact your support personnel.
1622	Error opening installation log file. Verify that the specified log file location exists and is writable.
1623	This language of this installation package is not supported by your system.



1625	This installation is forbidden by system policy. Contact your system administrator.
1626	Function could not be executed.
1627	Function failed during execution.
1628	Invalid or unknown table specified.
1631	The Windows Installer service failed to start. Contact your support personnel.
1632	The temp folder is either full or inaccessible. Verify that the temp folder exists and that you can write to it.
1633	This installation package is not supported on this platform. Contact your application vendor.
1638	Another version of this product is already installed. Installation of this version cannot continue. To configure or remove the existing version of this product, use Add/Remove Programs on the Control Panel.
1639	Invalid command line argument. Consult the Windows Installer SDK for detailed command line help.



Migrate7 Application Exit Codes

Exit Code	Description
0	The operation was successful
12	Process aborted
13	The user canceled the operation
246	Unable to create domain user
247	Unable to determine logged in user
248	Unable to open response file
249	Injecting to a Windows 9x system is not supported by Migrate7
251	No personalities exist for specified user on /autoinject command switch or Not all of the requested users could be found in any personality
252	No user exists for /autoextract command switch
253	Invalid command line option
254	Improper installation
255	Insufficient rights to execute Migrate7
257	More than one matching personality exists for specified /SOURCE on /AUTOINJECT command switch
259	Personality file not found
260	Insufficient rights to migrate users not currently logged on.
261	Invalid response file
263	Password is out of range must be between 7-15 letters, numbers, and/or underscores (" _")
264	/AUTOEXTRACT and /AUTOINJECT cannot be used at the same time
265	Invalid password
266	Import file not found
267	Import parameter not correct
268	No content items were selected for extraction
269	Error processing password
270	Multiple personalities exist for specified user(s) on injection
271	Configuration file not found



272	Invalid configuration file parameter
273	Template file is obsolete
274	Unable to open template file
275	Invalid data store entry
276	Configuration file is read-only
277	Cannot create default configuration file
278	Invalid configuration file
279	Cannot save configuration file
280	Cannot write to data store
284	Migrate7 is already running on this computer
285	Client must be updated before continuing. Invoke the Migrate7 Client manually to update.
286	No personalities exist for specified /SOURCE on /AUTOINJECT command switch
287	Invalid /EXCLUDEUSER parameter
288	Invalid /INCLUDEUSER parameter
289	Extraction failed
290	Injection failed
291	Unable to open file TxxTxp.ptp
292	Multiple redirections to the same user
293	Server disconnected
294	An obsolete personality was specified
295	Invalid /DOMAIN usage. Source domain and target domain must be separated by a ":" Only valid with the /AUTOINJECT switch.
296	Domain usage conflict. Cannot use /DOMAIN with /INCLUDEUSER switch if /INCLUDEUSER contains user redirection
297	Invalid Exclude Disk Parameter
298	Invalid Data Store
300	The configured HTTP server couldn't be reached
307	Personality already exists at data store location
310	Invalid network options



311	The provided HTTP parameter is incorrect
312	The Migrate7 engine was unable to allocate memory to complete the operation
313	Insufficient disk space to complete the operation
314	A file write error caused the operation to fail
315	No unique string found with http switch
317	The HTTP switch cannot be used with /PERSONALITY, /DATASTORE, /MAPPINGFILE, or /SOURCE switches
319	The operating system denied access to the specified file
320	A HTTP-related operation failed
321	Invalid /EXCLUDEDOMAIN switch
322	Spaces are not allowed in the upload directory
323	Migrate7 does not support backup on non-NT platforms
324	HTTP server does not allow directory listing
325	No personalities found.
326	Load user registry hive failed
327	/INJECTTOLOGGEDINUSER can only be used with a single user.
328	File too large to migrate
330	The configuration file could not be read
331	HTTP authentication error
332	The version of the specified personality is not compatible with the version of Migrate7 being used
333	The specified personality is corrupt and cannot be read
334	The extraction operation partially failed. This is almost always due to Migrate7 being denied access to a file during the extraction and is not uncommon to see for temporary files created during Windows update installations. The operation log contains information about the affected file(s).
335	The injection operation partially failed. This is almost always due to Migrate7 being denied access to a file when trying to write it to the target system. The operation log contains information about the affected file(s).
336	The rule file being imported is not a valid rule import/export file.
337	The evaluation license has expired.
338	All purchased licenses have been used.

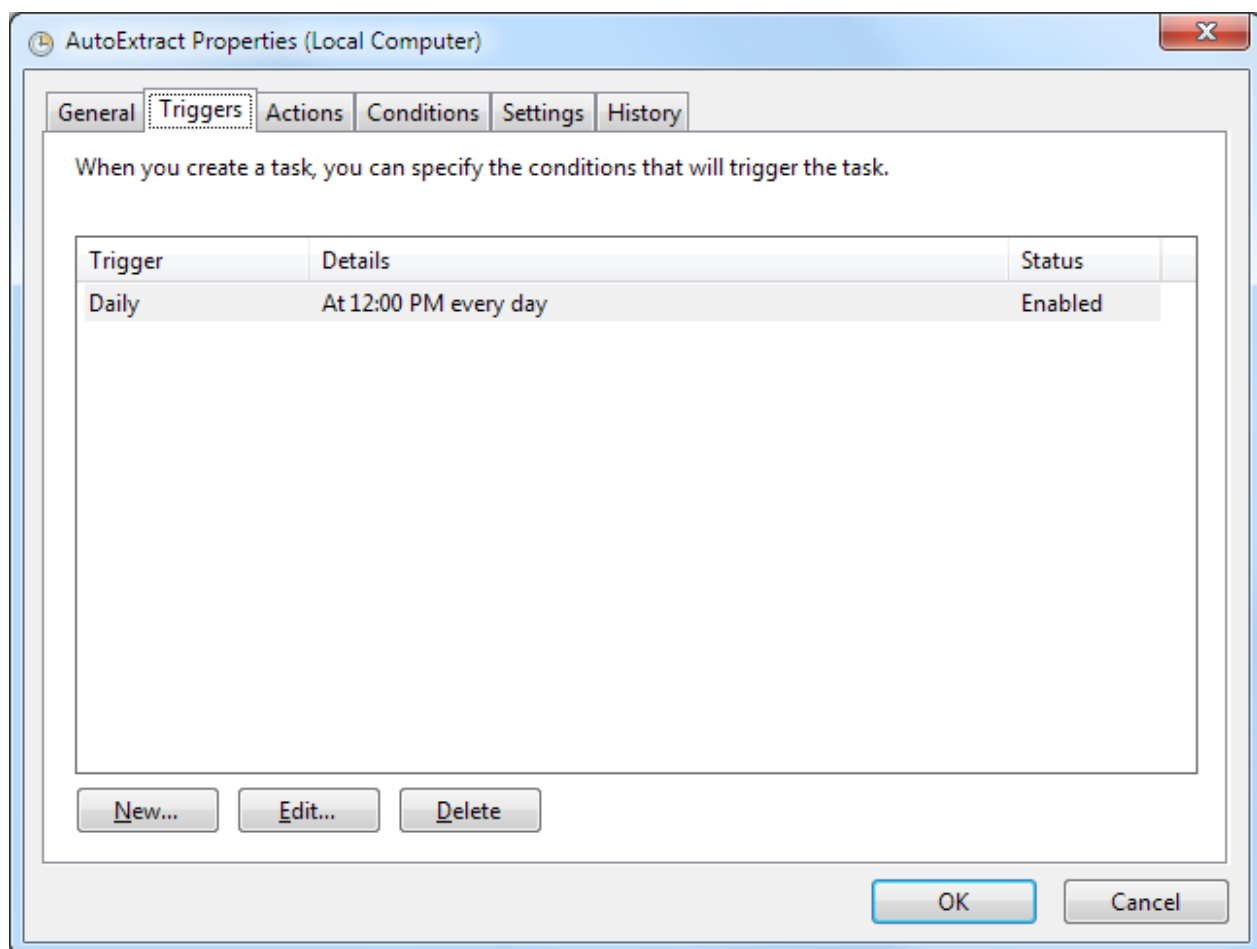


339	The /MAPPINGFILE parameter must be used with the /AUTOINJECT parameter.
340	The /MAPPINGFILE parameter can't be used with the /SOURCE parameter.
341	The mapping file specified either does not exist or can't be read.
342	The mapping file specified does not contain a mapping for the computer where the injection is being performed.
343	The mapping file specified doesn't contain valid mapping data.
344	The source computer name specified either through a mapping file using the /mappingfile parameter or through the /source parameter is not a valid computer name.
345	A local user could not be created because the default password defined in the Migrate7 configuration file doesn't meet the password policy on the system.

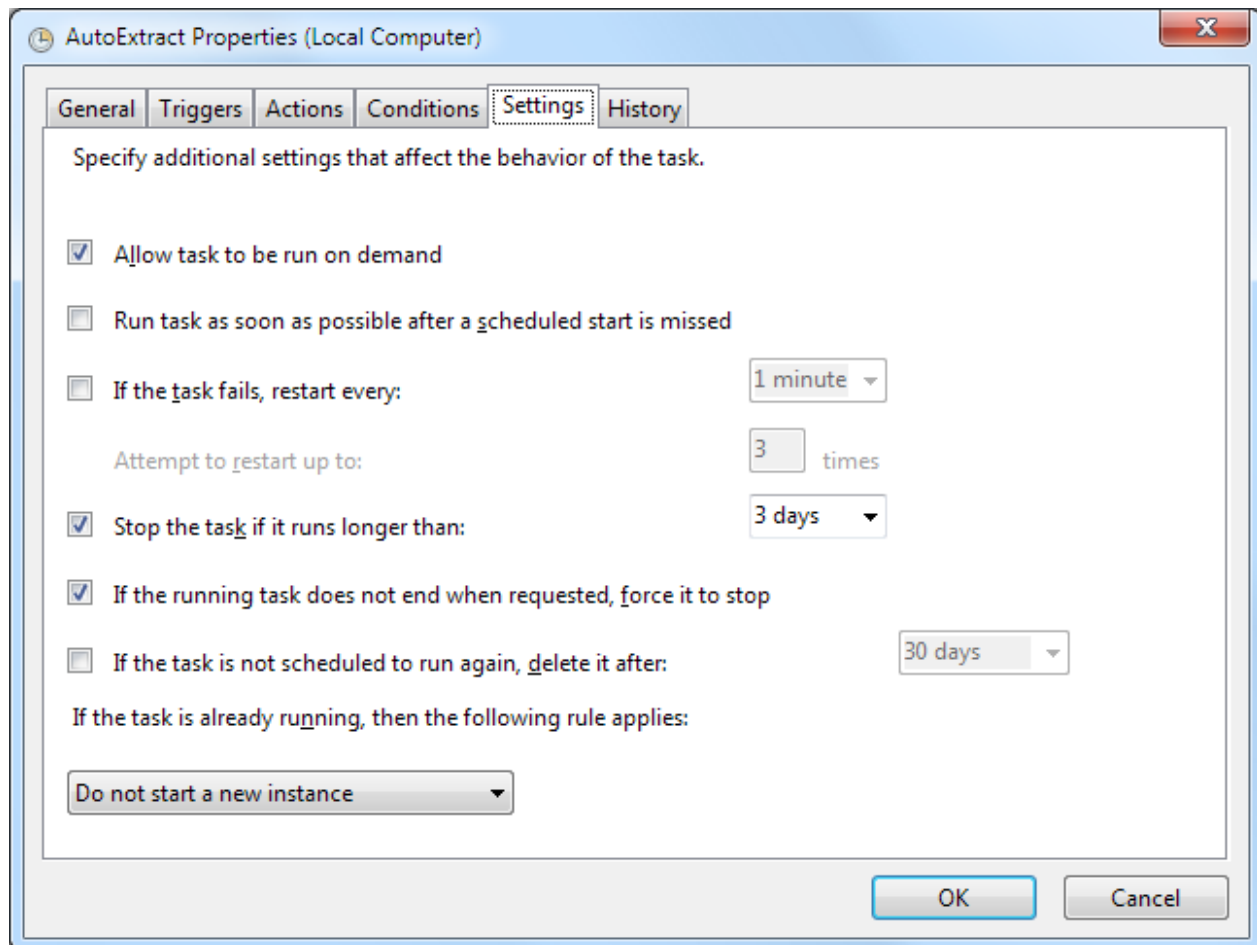
15. Using Migrate7 With a Scheduler

Some Migrate7 license agreements allow for Migrate7 to be indefinitely used on the target PC. This means you can continue to use Migrate7 to perform regular backups of user data and settings. Using the standard scheduler that comes with Windows you can choose to have periodic extractions. For example the Windows scheduler will allow administrators to perform an extraction once every 4 weeks on Thursday at noon. You can also schedule tasks at logon, daily or monthly.

Here is a screen shot of a typical scheduled task that was created using the Windows 7 Task Scheduler



There are also settings that can be modified to provide additional control over when scheduled tasks are executed. Below is an example of the settings available:





16. Copyright and Patent Information

©2011 Tranxition Corporation.

All Rights Reserved.

Protected by US Patents 6,728,877 and 7,346,766 along with European Patent 1173809.

The information in this document is subject to change without notice and should not be construed as a commitment by Tranxition Corporation. Tranxition Corporation assumes no responsibility for any errors that might appear in this document.

The software described in this document is furnished under a license and may be used or copied only in accordance with the terms of such license. No responsibility is assumed for the use or reliability of software or equipment that is not supplied by Tranxition Corporation or its affiliated companies.

Restricted Rights: Use, duplication or disclosure by the U.S. Government is subject to restrictions as set forth in subparagraph (c) (1) (ii) of the Rights in Technical Data and Computer Software clause at DFARS 252.227 7013. Migrate7 and the Tranxition logo are trademarks of Tranxition Corporation. Microsoft Windows XP, Windows Vista and Windows 7 are registered trademarks of Microsoft Corporation. All other trademarks and registered trademarks are the property of their respective holders.